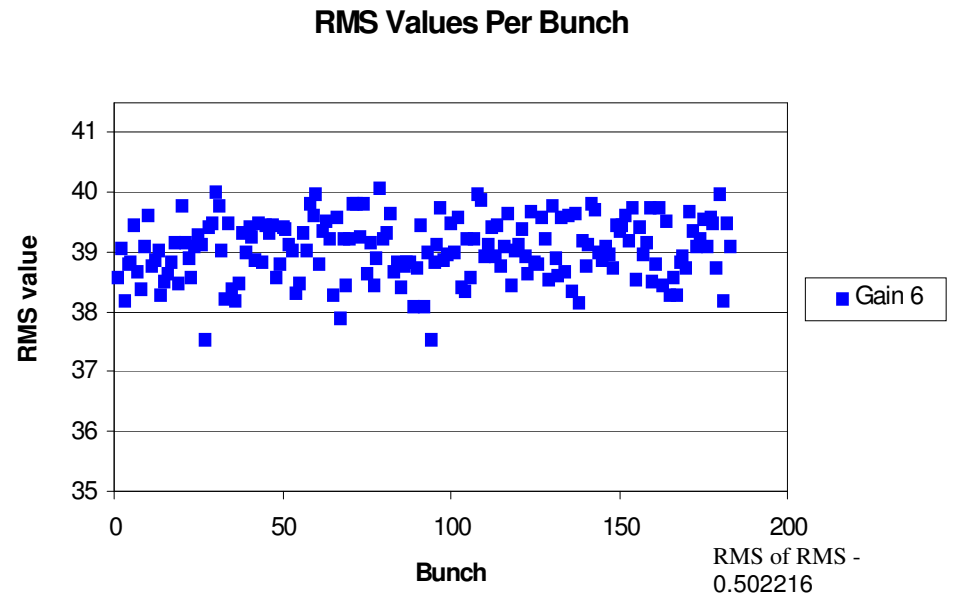
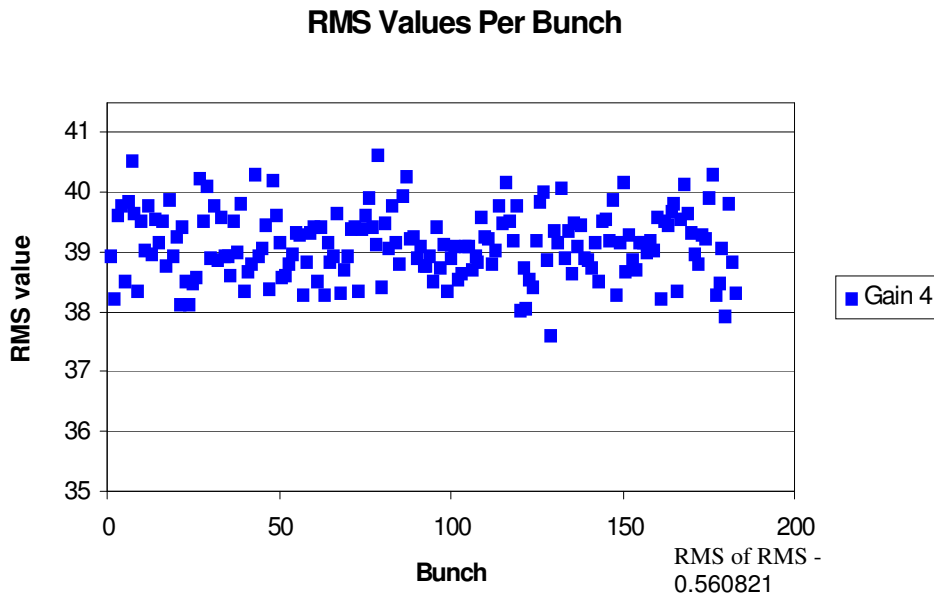
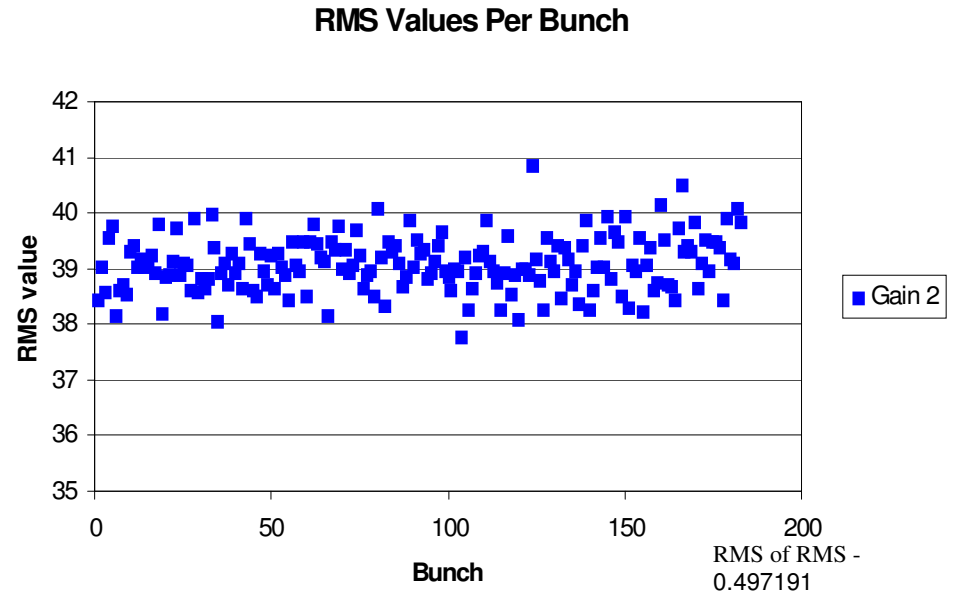
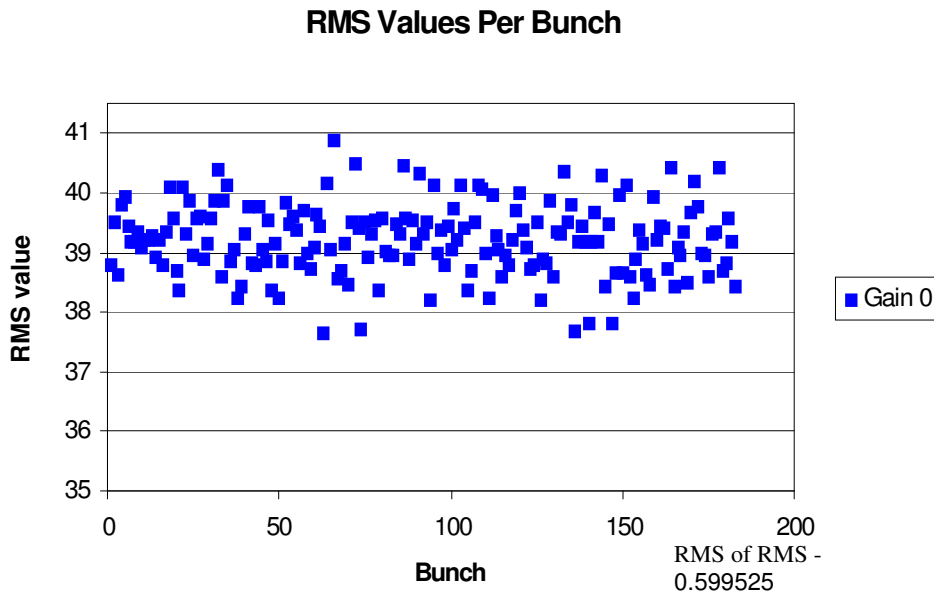


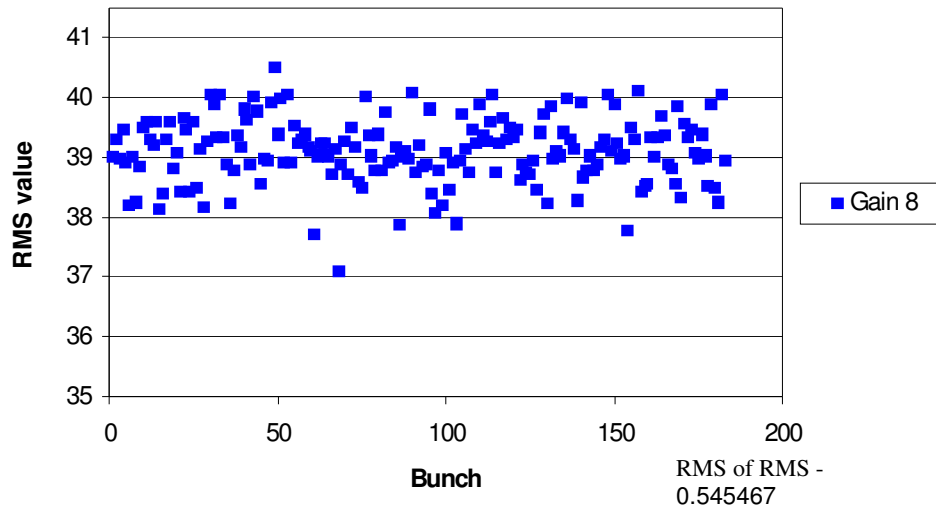
Channel 0,800/800 Timing, 183 Bunches, 2.75k Turns



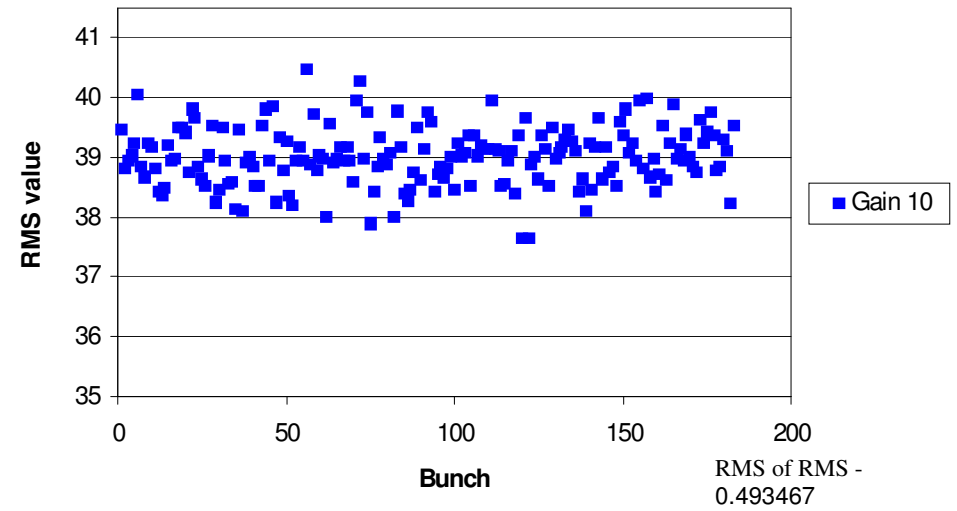
Note: Clock 79 Used, First Board Used, Second Board Installed, Second ADC Disabled For All Measurements

Channel 0,800/800 Timing, 183 Bunches, 2.75k Turns

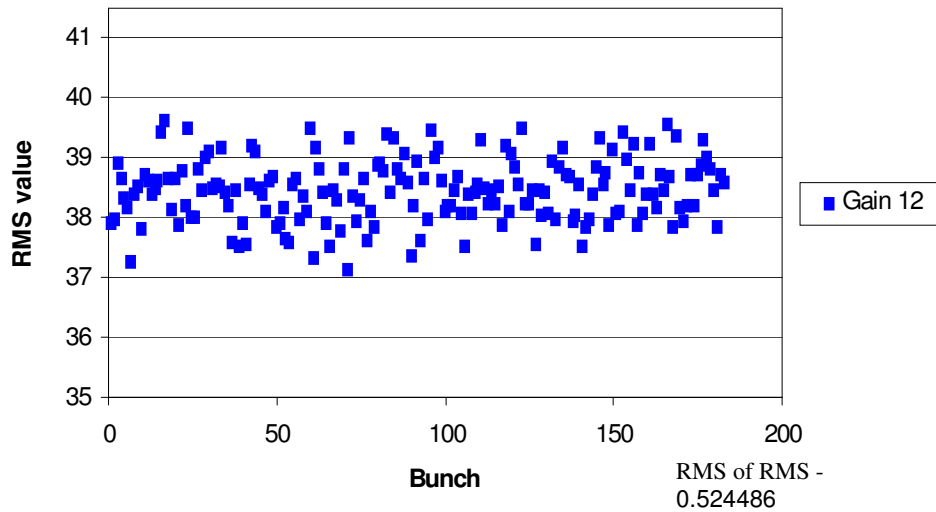
RMS Values Per Bunch



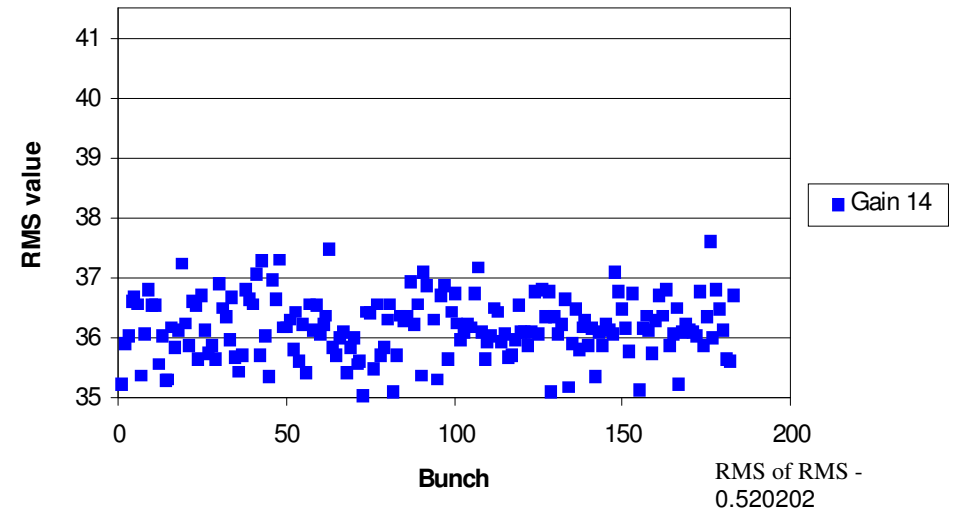
RMS Values Per Bunch



RMS Values Per Bunch

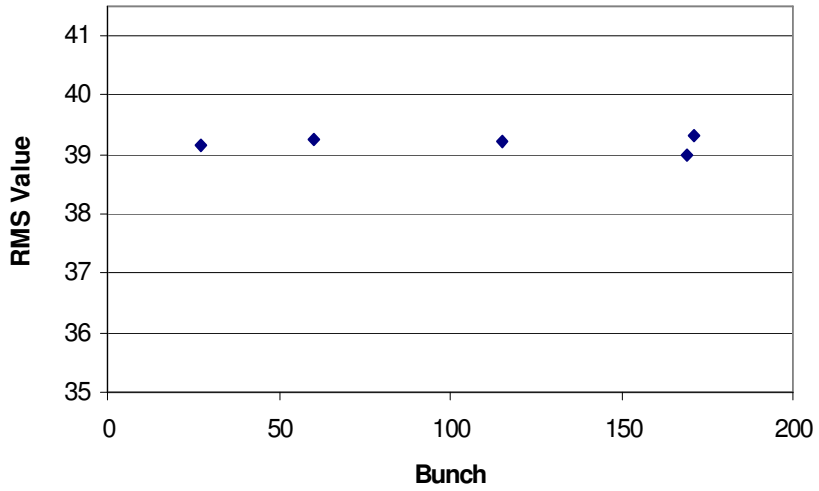


RMS Values Per Bunch

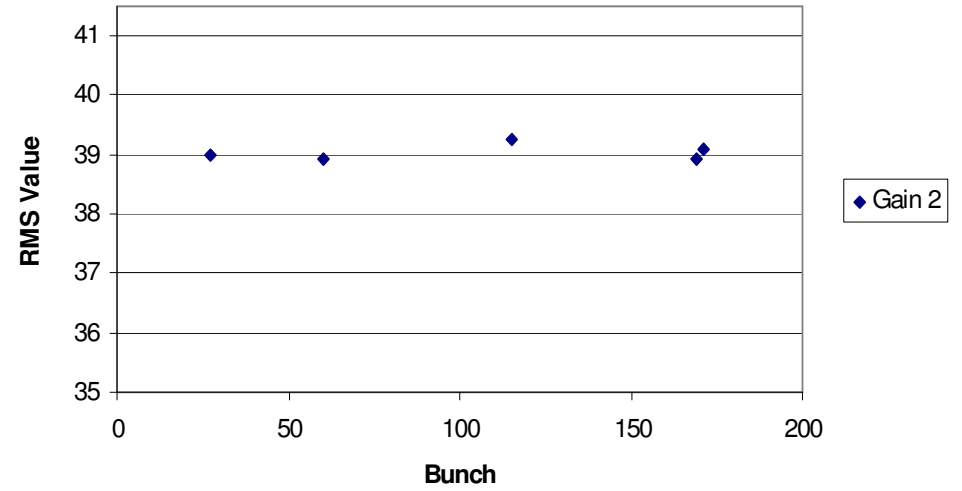


Bunches 27,60,115,169,171 Ch. 0, 800/800, 65.5k Turns

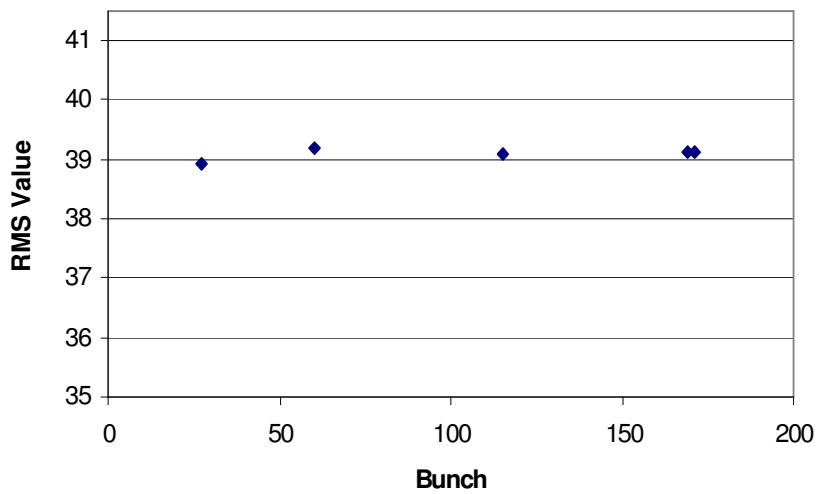
RMS Values Per Bunch (v2)



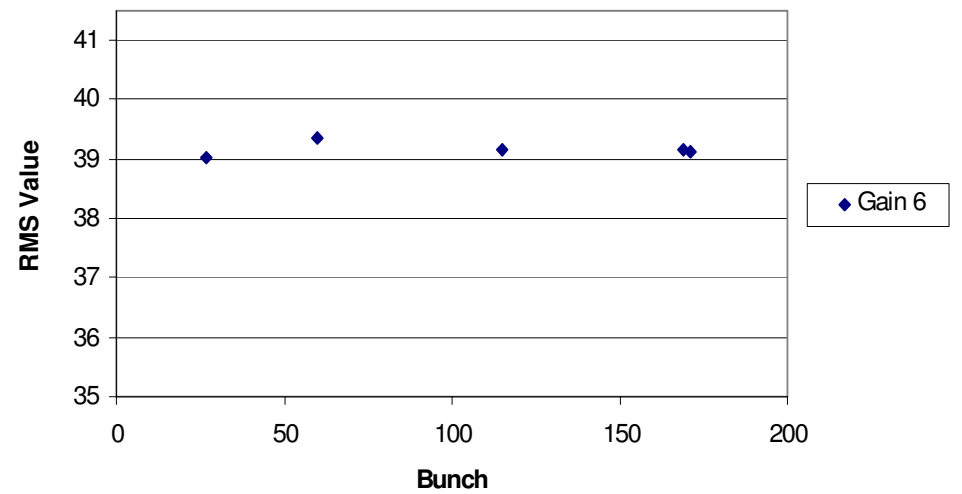
RMS Values Per Bunch (v2)



RMS Values Per Bunch (v2)



RMS Values Per Bunch (v2)



Bunches 27,60,115,169,171 Ch. 0, 800/800, 65.5k Turns

