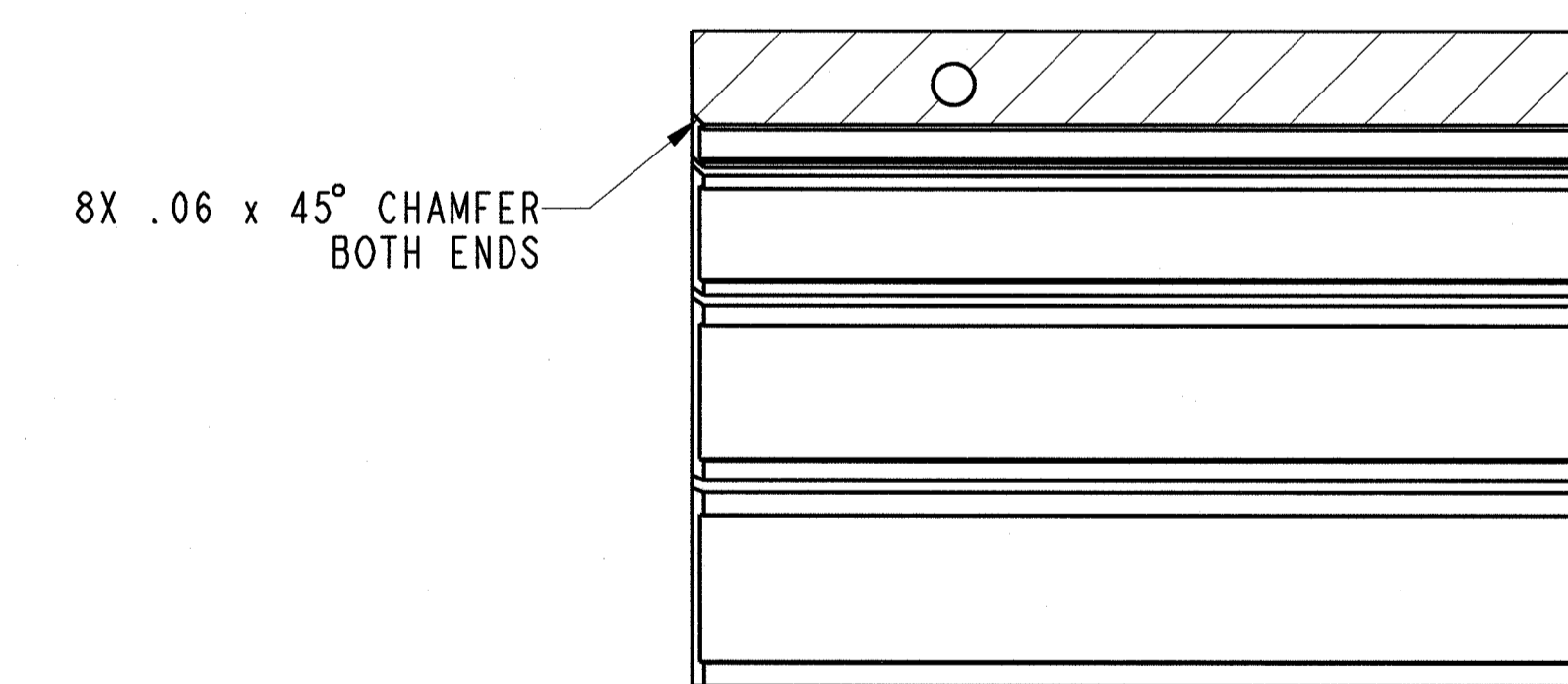
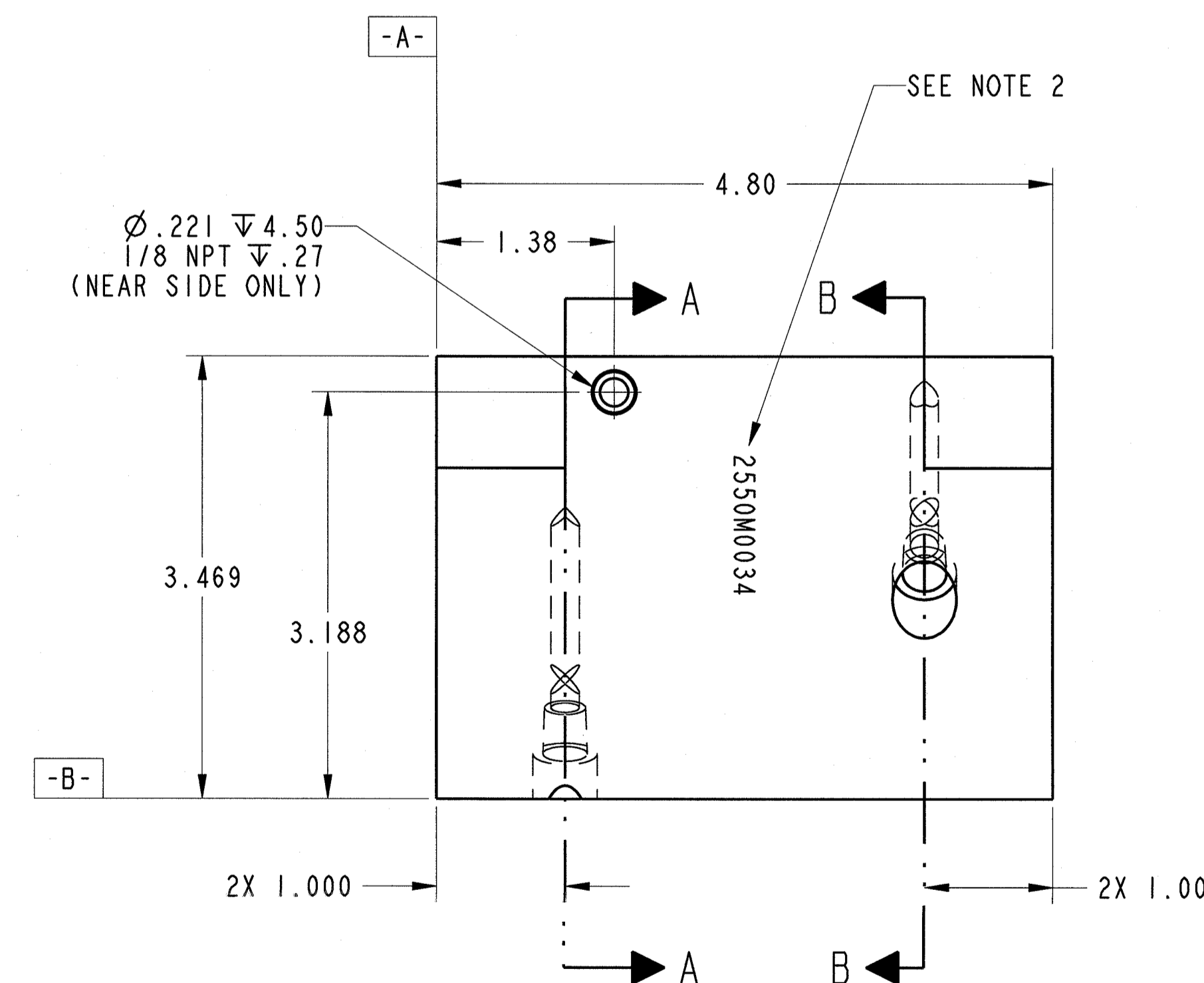
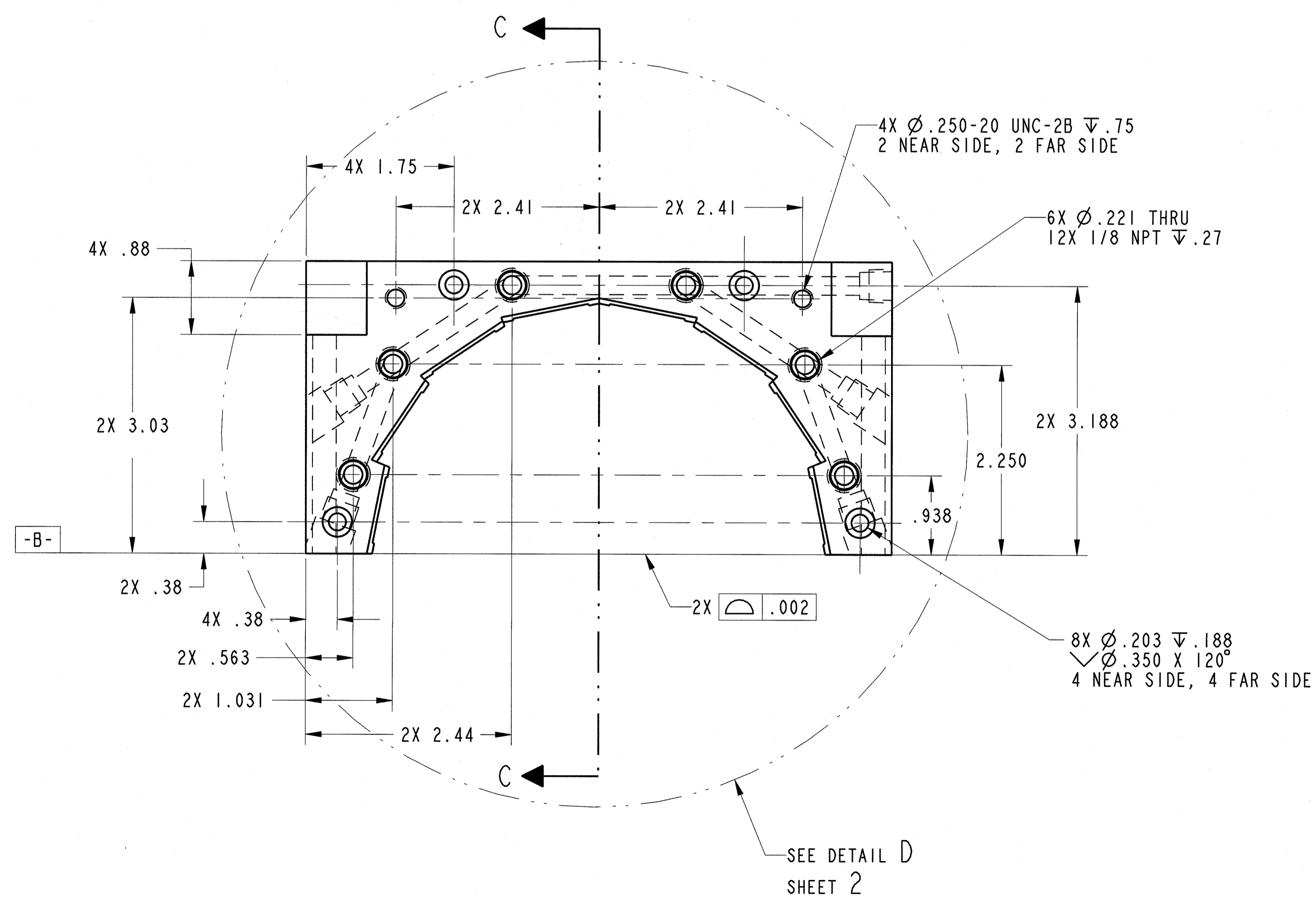
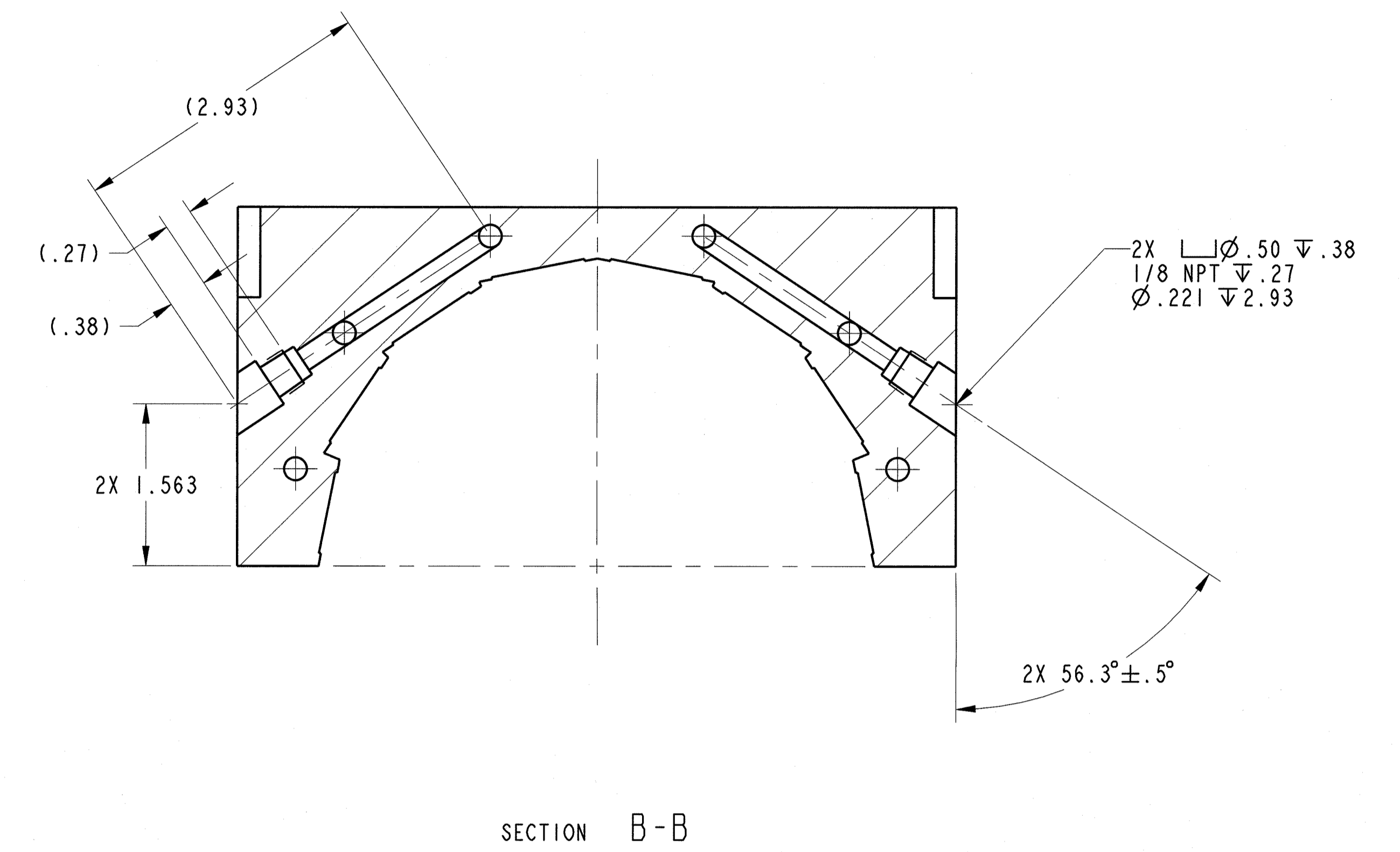
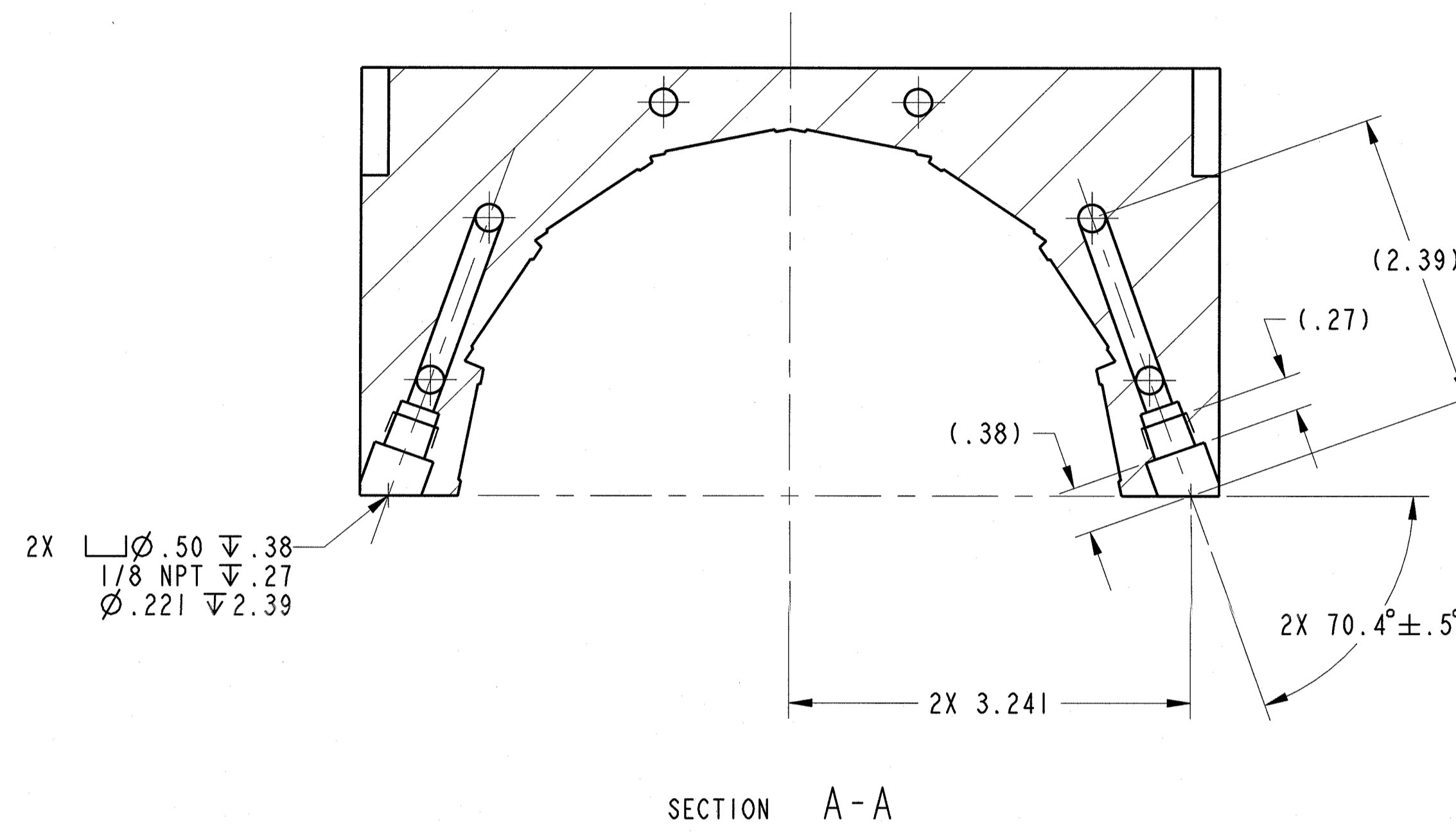
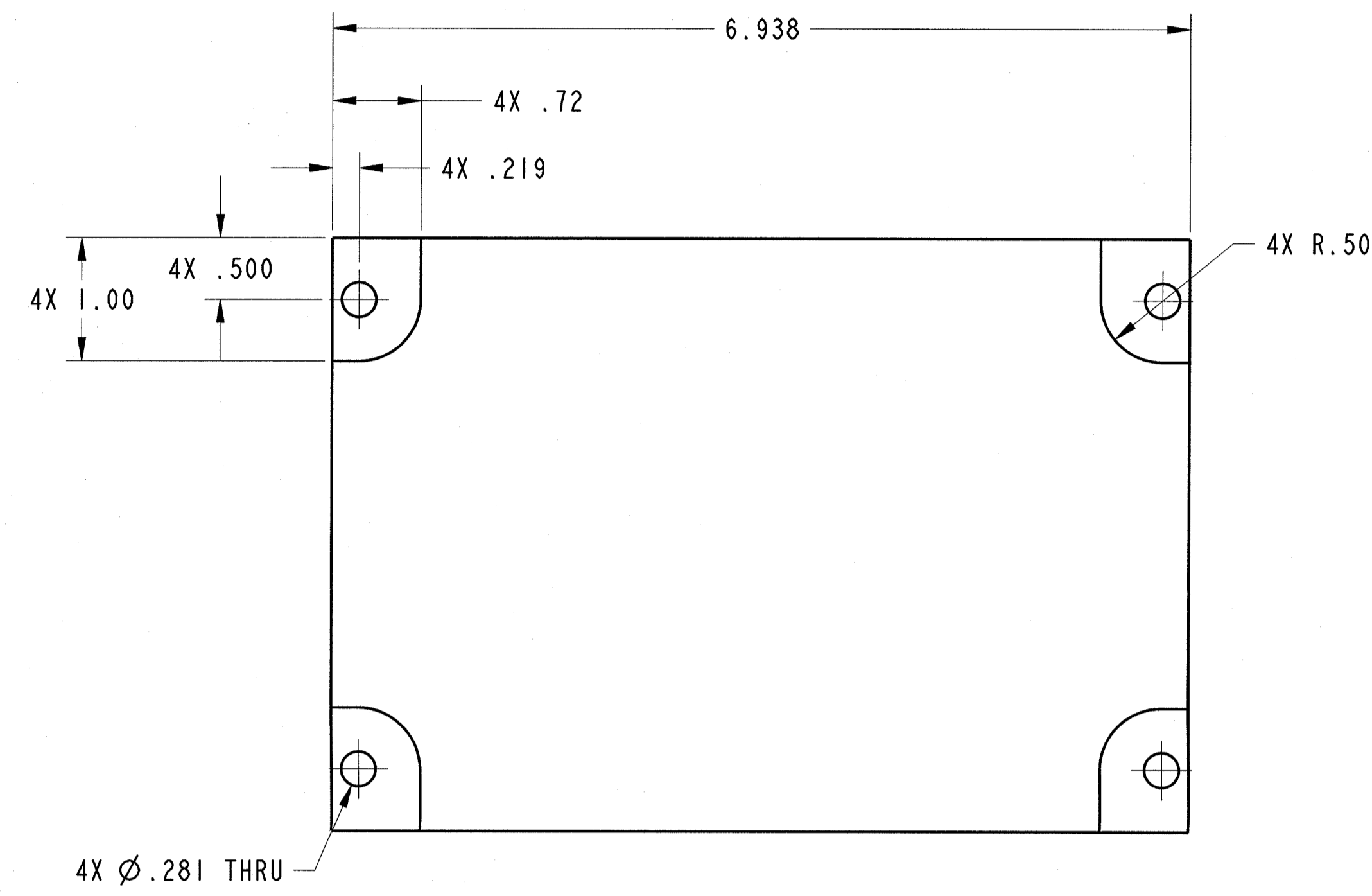


NOTES:

1. MATERIAL: ALUMINUM 6061-T6 PER ASTM B221.
2. VIBRO-ETCH PART, WITH DRAWING NUMBER, WITH MIN .12 HIGH CHARACTERS IN ACCORDANCE WITH MIL-STD-130. LOCATE AND ORIENT TEXT APPROXIMATELY AS SHOWN.
3. DIMENSIONS REPRESENTED IN POINT CHART (SHEET 2) ARE PRELIMINARY. FINAL DIMENSIONS TO BE ISSUED, BY BROOKHAVEN NATIONAL LABORATORY, WITH NEXT DRAWING REVISION.
4. DEPTH OF POCKET TO BE CUT TO REQUIRED THICKNESS BASED UPON VENDOR SELECTED BONDING AGENT

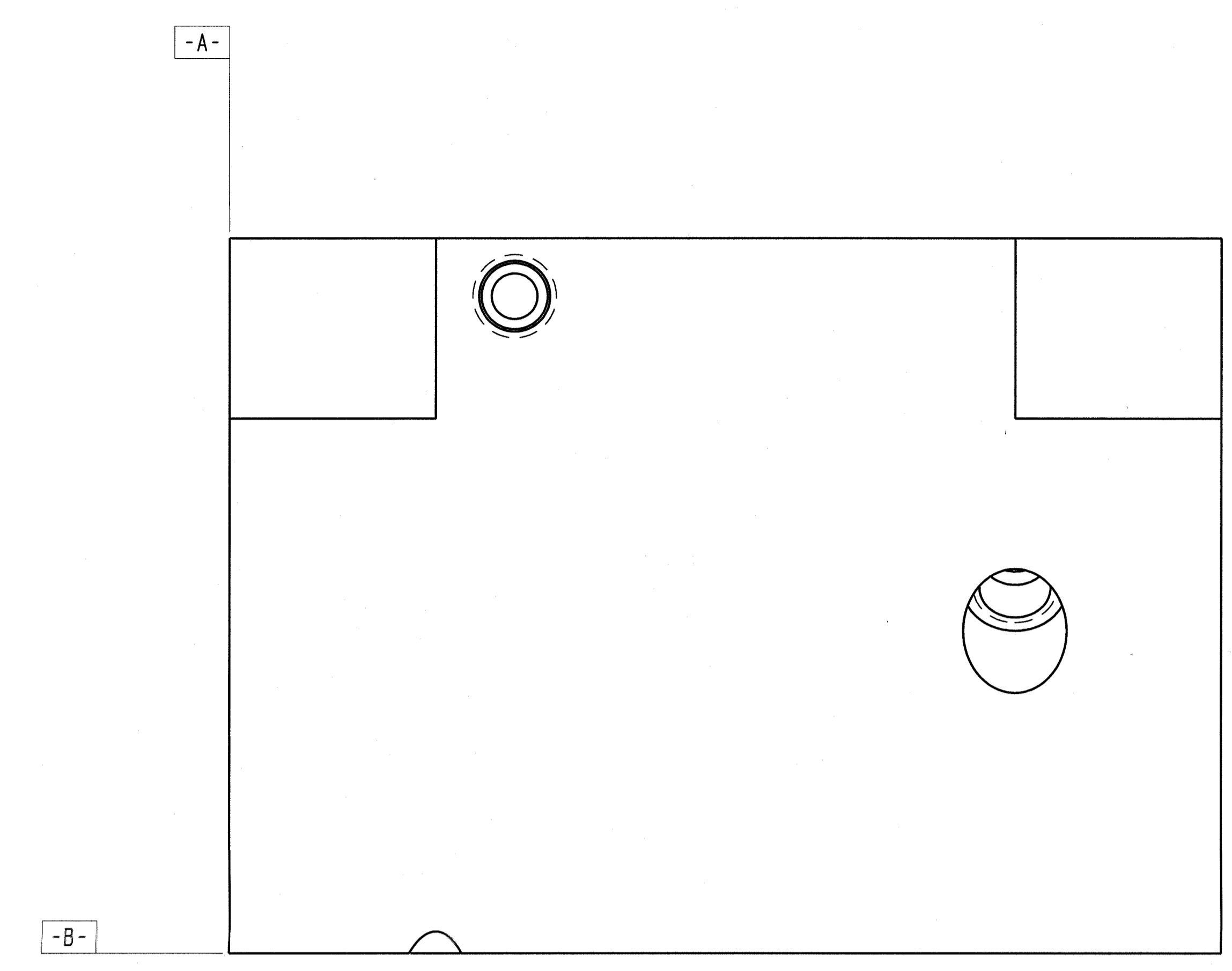
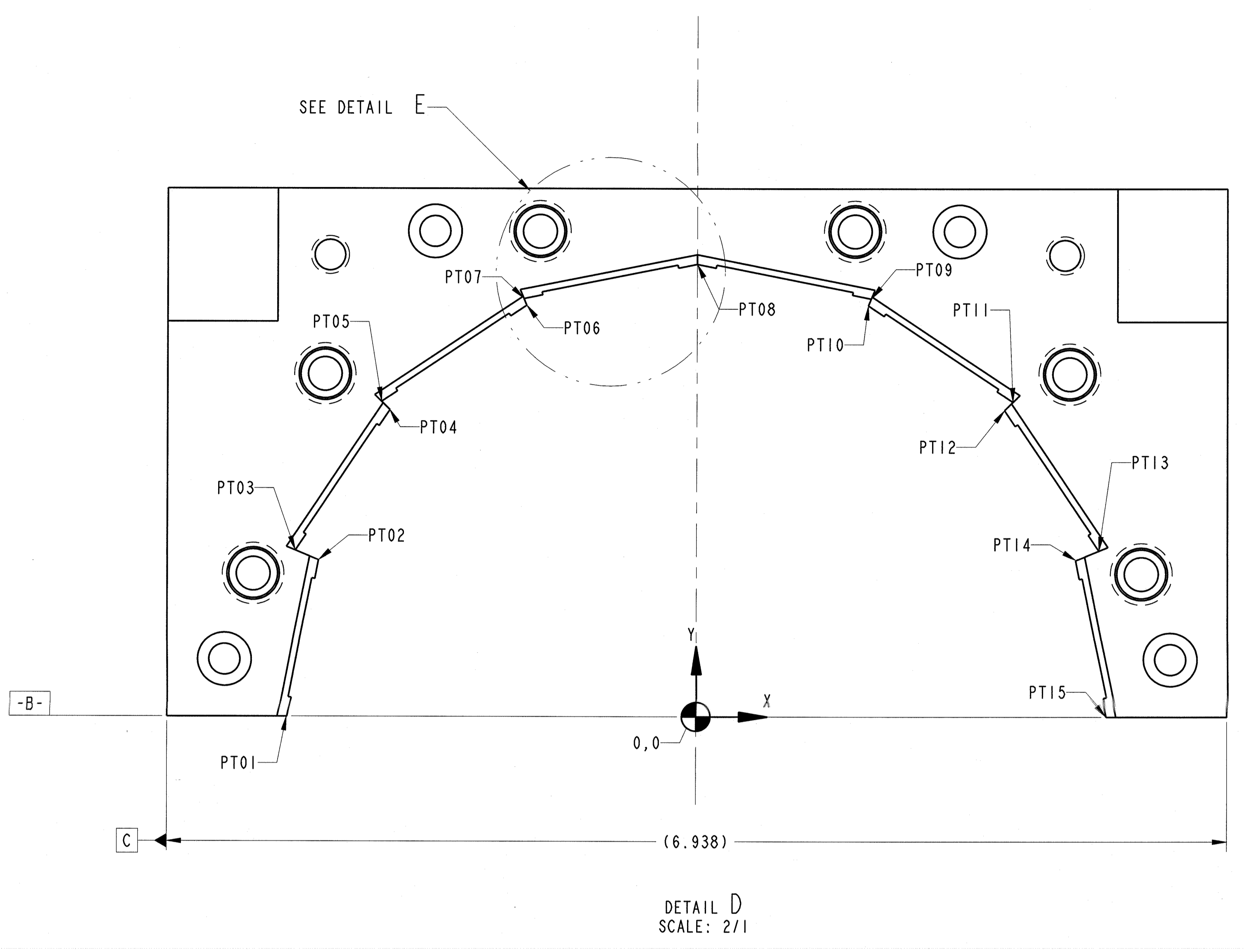
| REVISION APPROVALS |         |                 |      |    |     |     |      |
|--------------------|---------|-----------------|------|----|-----|-----|------|
| REV                | ECN NO. | DESCRIPTION     | DATE | BY | CHK | DES | SUPV |
| A                  | -       | INITIAL RELEASE | -    | -  | -   | -   | -    |



SECTION C-C

|   |                 |  |                   |  |             |
|---|-----------------|--|-------------------|--|-------------|
| INTERPRET IN GENERAL ACCORDANCE WITH ASME Y14.5                                       |                 |  |                   | COLLIDER-ACCELERATOR DEPARTMENT<br>BROOKHAVEN NATIONAL LABORATORY<br>UPTON, N.Y. 11973 |             |
| UNLESS OTHERWISE SPECIFIED  |                 | DRAWN BY S. TRABOCCHI 02/20/17   |                   | CBETA<br>HALBACH MAGNETS<br>BD CORE LEFT   |             |
| DIMENSIONS ARE IN INCHES<br>DECIMAL TOLERANCES<br>XXX ± .005<br>ANGULAR TOLERANCE ±1° |                 | CHECKED BY [Signature] 2/21/17<br>APPROVAL BY [Signature] 2/21/17<br>DIVISION [Signature] 7/17 |                   | SIZE E<br>DRAWING NUMBER: 2550M0034<br>REV. A  |             |
| USED ON DRAWING NO.   | QTY. PER ASS'Y. | 125  | BREAK SHARP EDGES | G.A. CATEGORY  | A3          |
| APPLICATION   | FINISH          | MAX. .03 MIN. 015  | SHEET / REC       | SCALE: 1/1   | WEIGHT: 4.9 |

Dwg. No. 2550M0034 SHT 1 OF 2



⊕ .002 A B C

POINT CHART - SEE NOTE 3\*

| POINT NAME | X      | Y     |
|------------|--------|-------|
| PT01       | -2.682 | 0.000 |
| PT02       | -2.477 | 1.026 |
| PT03       | -2.630 | 1.089 |
| PT04       | -2.013 | 2.013 |
| PT05       | -2.067 | 2.067 |
| PT06       | -1.119 | 2.701 |
| PT07       | -1.137 | 2.745 |
| PT08       | 0.000  | 2.972 |
| PT09       | 1.137  | 2.745 |
| PT10       | 1.119  | 2.701 |
| PT11       | 2.067  | 2.067 |
| PT12       | 2.013  | 2.013 |
| PT13       | 2.630  | 1.089 |
| PT14       | 2.477  | 1.026 |
| PT15       | 2.682  | 0.000 |

