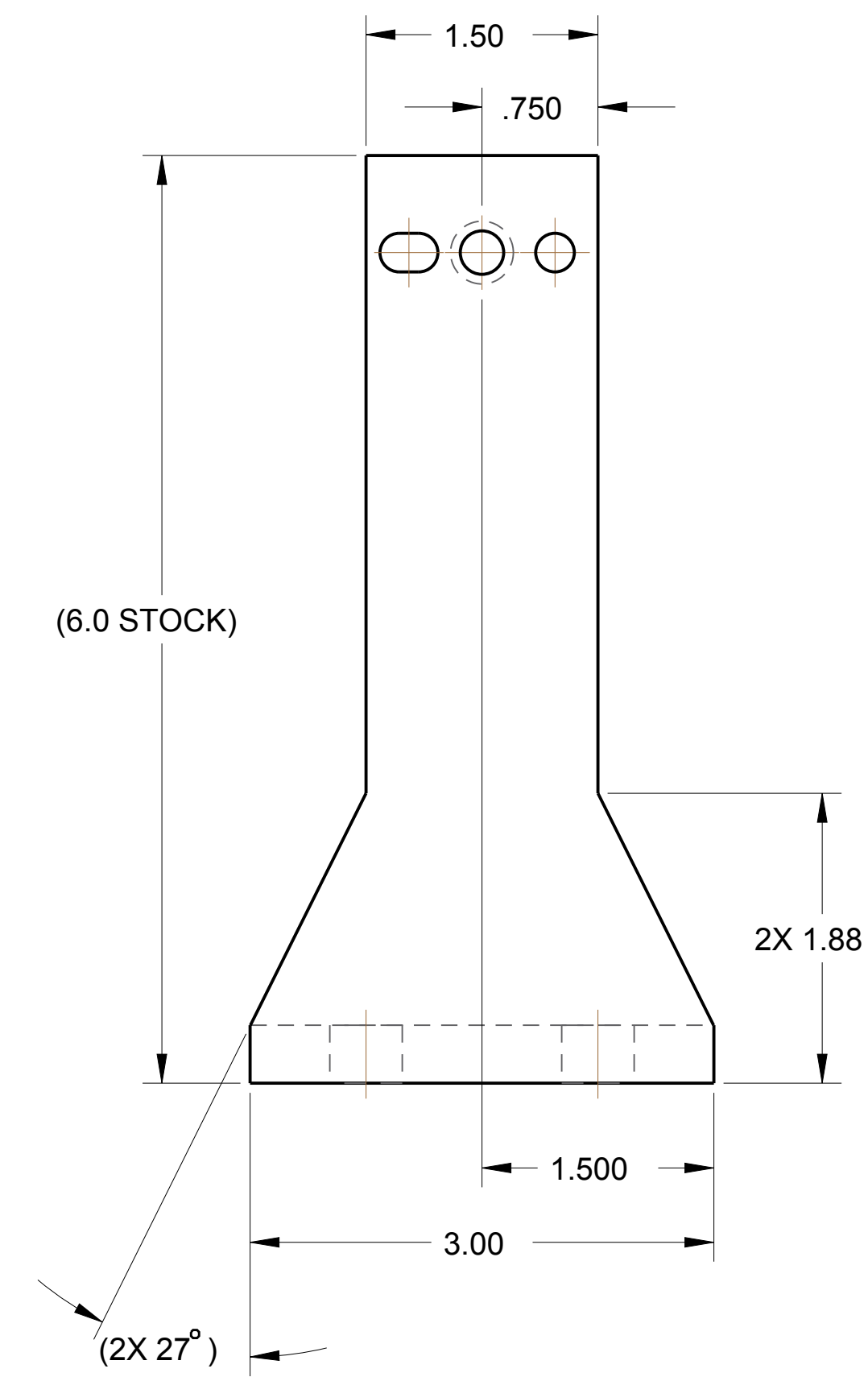
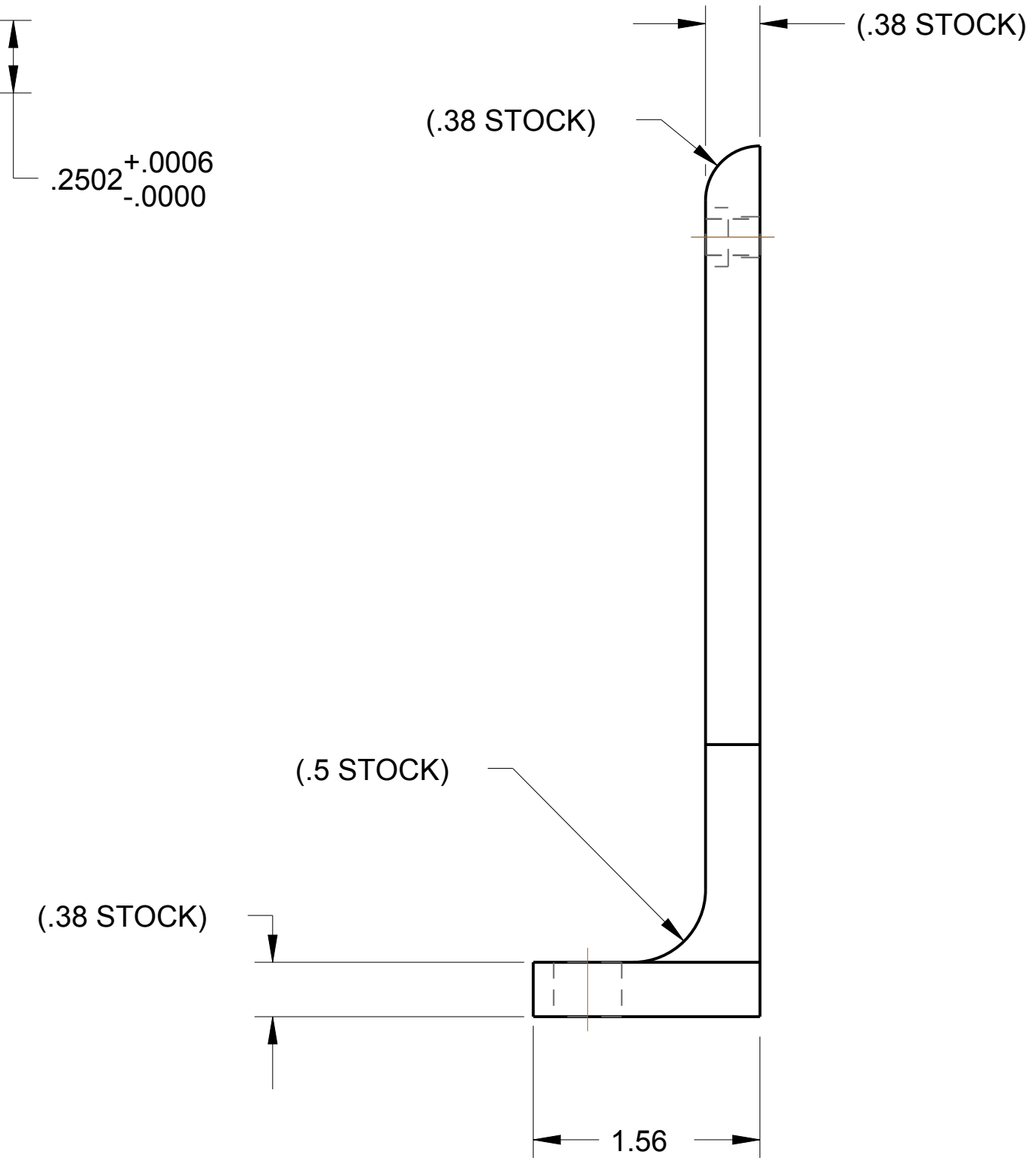
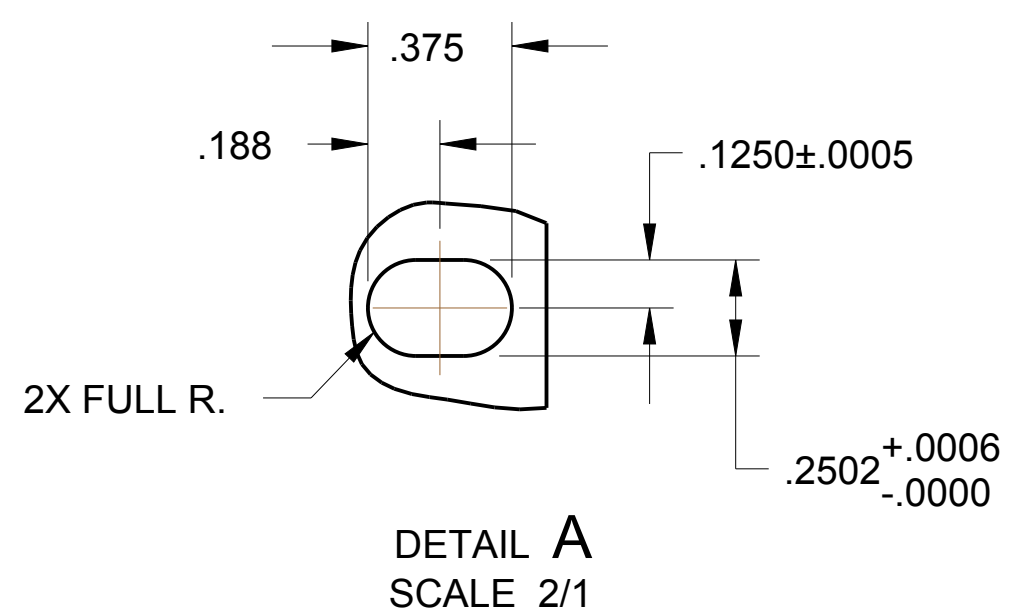
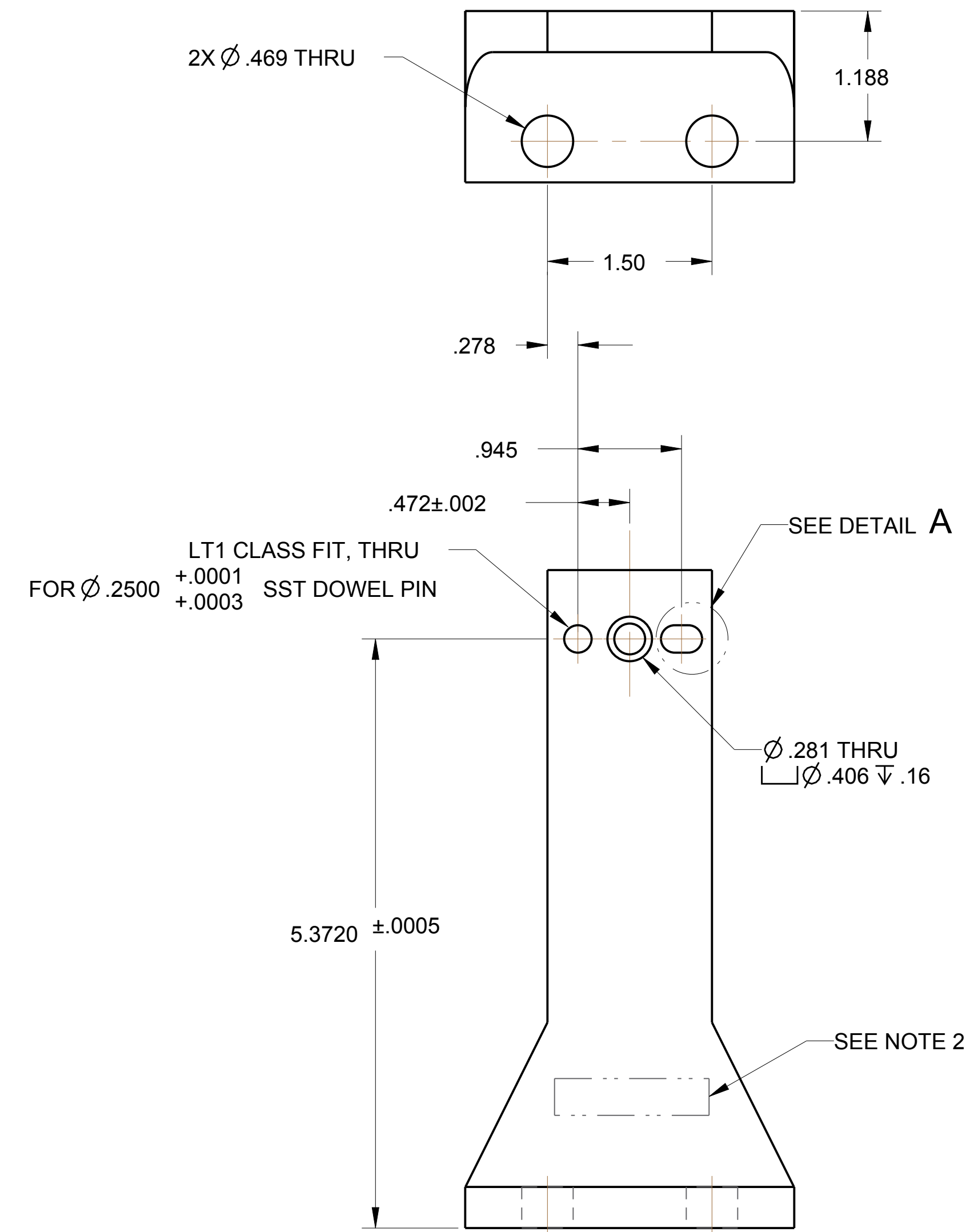


NOTES:

1. MATERIAL: ANGLE ALUMINUM STRUCTURAL TYPE 6061-T6 PER ASTM B308
2. VIBRO-ETCH PART WITH DRAWING NUMBER WITH MIN .12 HIGH CHARACTERS IN ACCORDANCE WITH MIL-STD-130, LOCATE APPROX AS SHOWN.

REVISION APPROVALS							
REV	ECN NO.	DESCRIPTION	DATE	BY	CHK	DES	SUPV
A	-	INITIAL RELEASE	-	-	-	-	-



2570M0010		6	125		BREAK SHARP EDGES				COLLIDER-ACCELERATOR DEPARTMENT BROOKHAVEN NATIONAL LABORATORY UPTON, N.Y. 11973			
USED ON DRAWING NO.		QTY. PER ASSY.	FINISH		MAX. .001 IN. 015		DRAWN BY: S. TRABOCCHI 08/24/17 CHECKED BY: S. RESTMEYER 3/19/18 DESIGN APPROVAL: A. ARNO 3/20/18 ENG / PNY APPROVAL: G. MAHLER 3/20/18 SUPERVISOR APPROVAL: J. TUOZZOLO 3/20/18 CEE / CME DIVISION HEAD QA SAFETY / RSC DEPARTMENT CHAIR		CBETA TOP PLATE ASSEMBLY BRACKET, BPM SUPPORT, TYPE 2			
APPLICATION		DRAWING NUMBER: 2570M0068		REV. A		SIZE: D Q.A. CATEGORY: A3 SCALE: 1/1 WEIGHT: 1.9 SHEET OF 1 1		CREO				

DWG NO 2570M0068 SHIT 1 OF 1