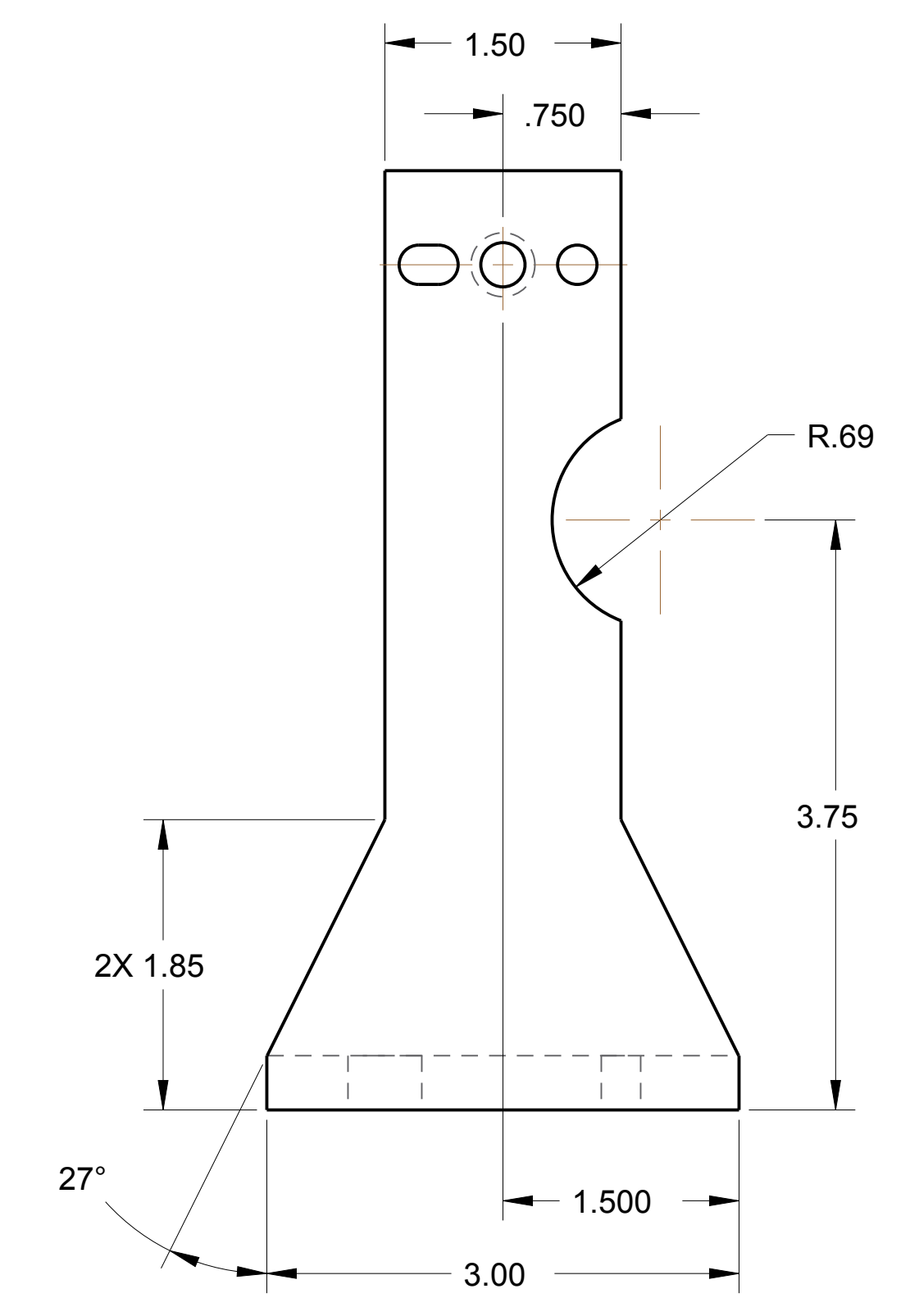
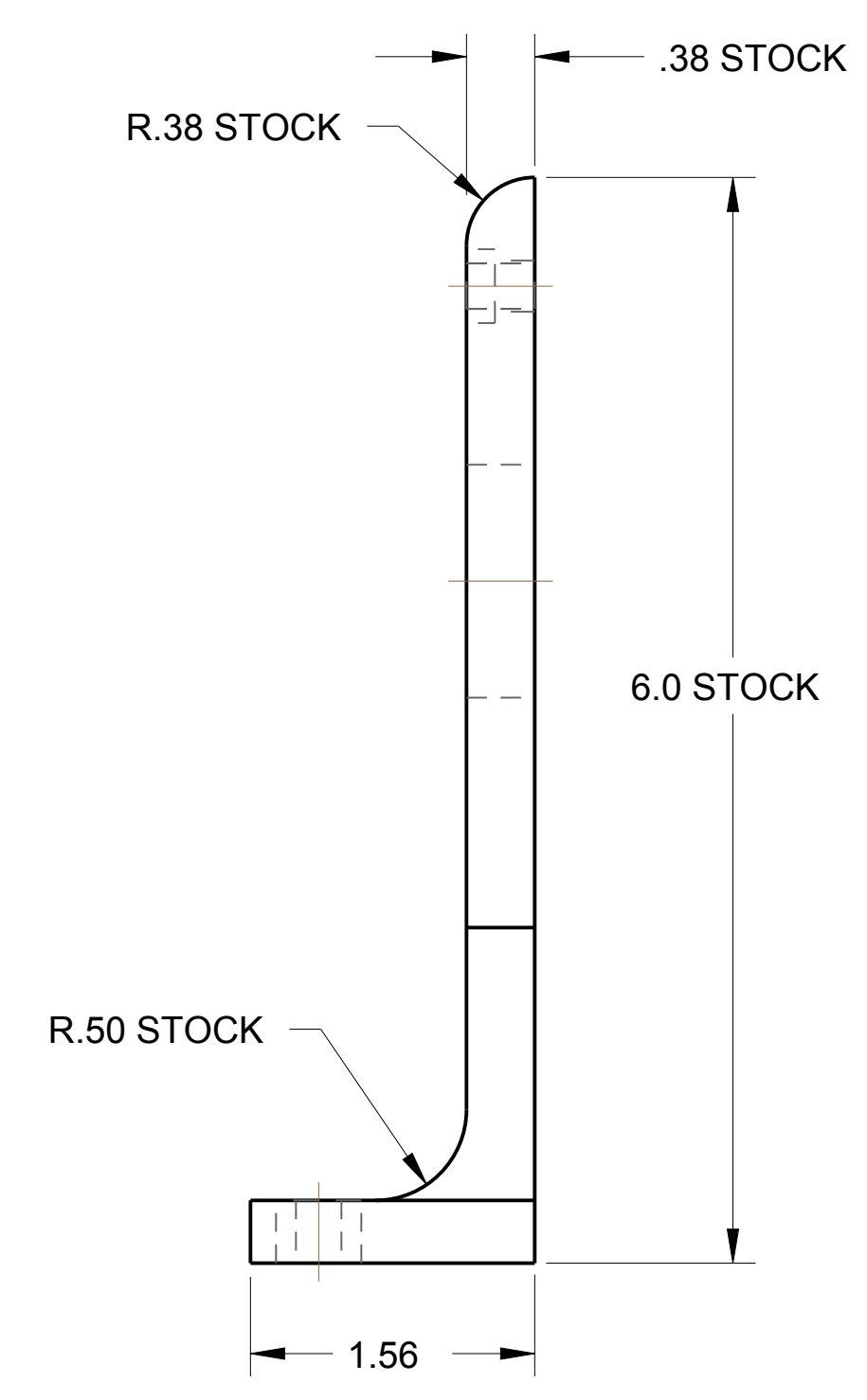
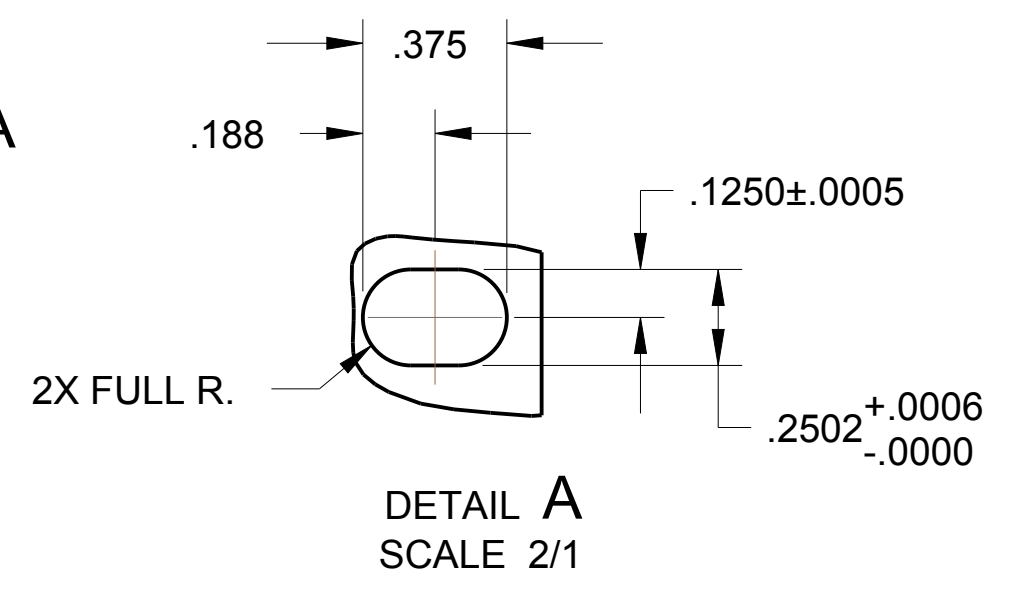
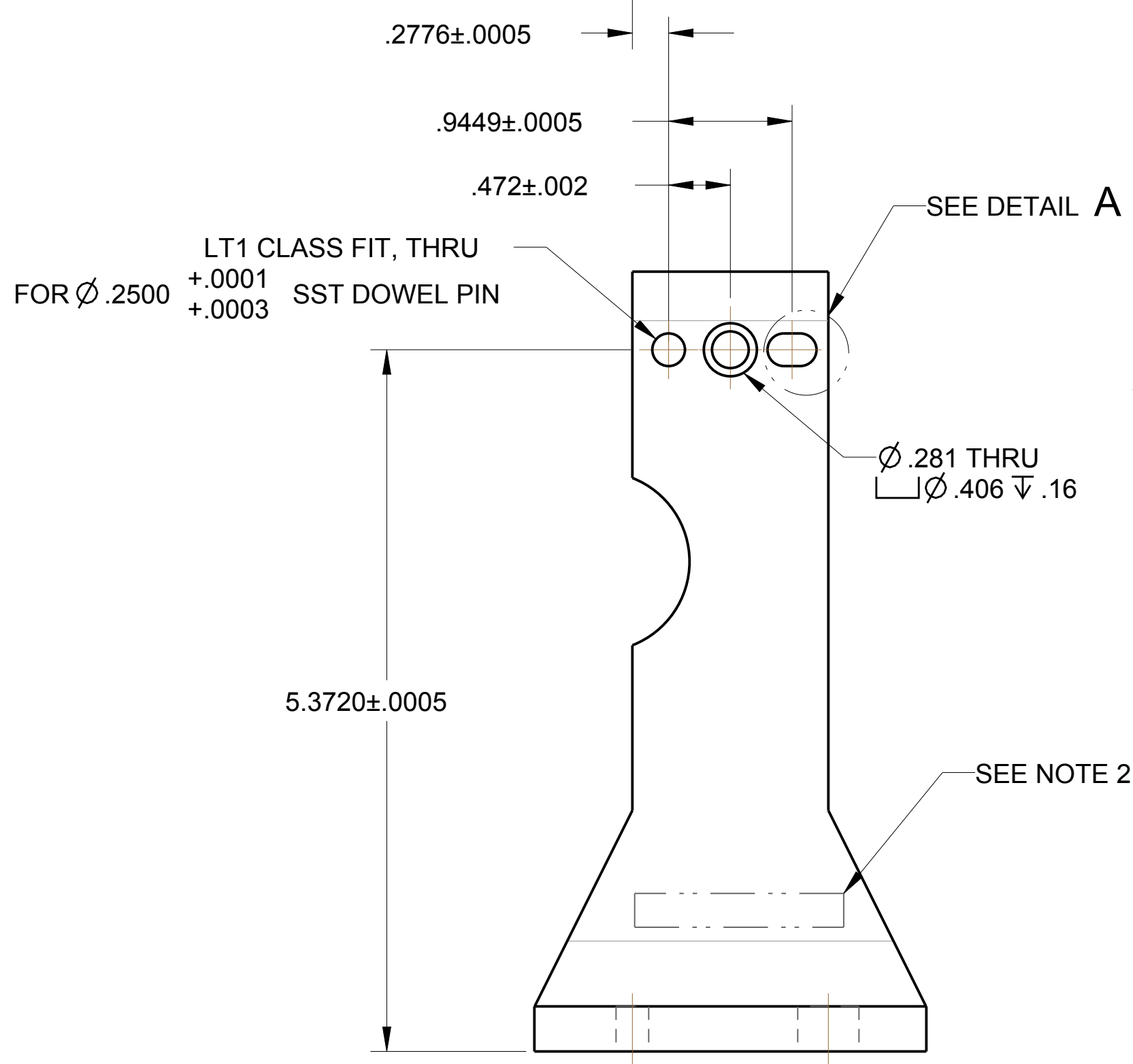
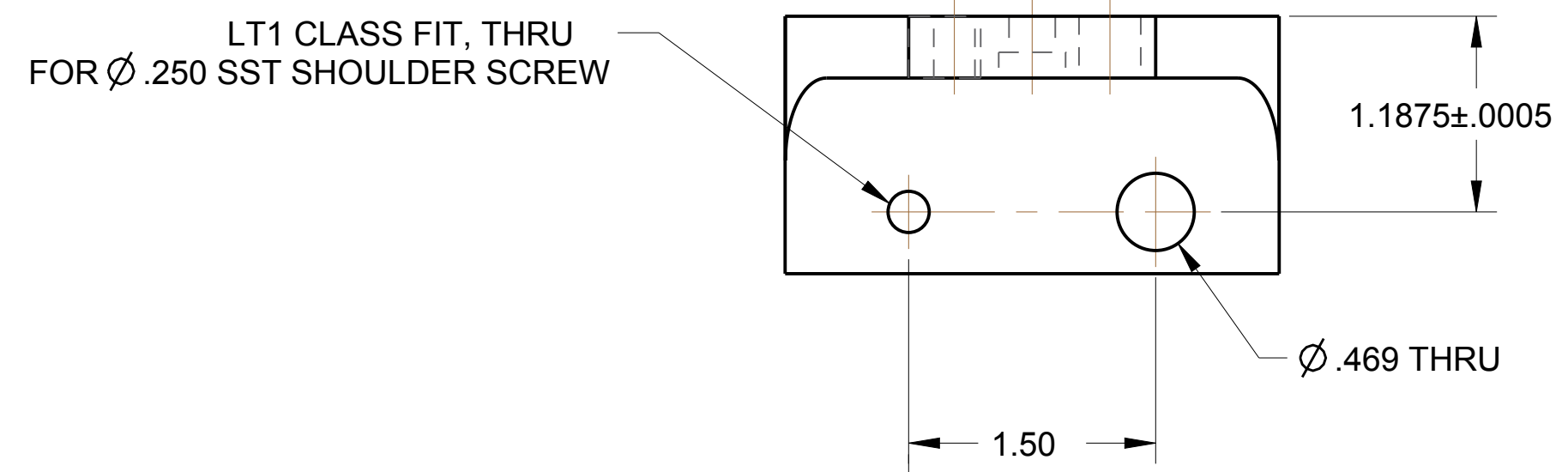


NOTES:

1. MATERIAL: ANGLE ALUMINUM STRUCTURAL TYPE 6061-T6 PER ASTM B308
2. VIBRO-ETCH PART WITH DRAWING NUMBER WITH MIN .12 HIGH CHARACTERS IN ACCORDANCE WITH MIL-STD-130, LOCATE APPROX AS SHOWN.

REVISION APPROVALS								
REV	ECN NO.	DESCRIPTION	DATE	BY	CHK	DES	ENG	SUPV
A	-	INITIAL RELEASE	-	-	-	-	-	-



		INTERPRET IN GENERAL ACCORDANCE WITH ASME Y14.5				COLLIDER-ACCELERATOR DEPARTMENT BROOKHAVEN NATIONAL LABORATORY UPTON, N.Y. 11973			
		UNLESS OTHERWISE SPECIFIED				DRAWN BY: S. TRABOCCHI 09/27/17 CHECKED BY: S. RESTMEYER 3/19/18 DESIGN APPROVAL: A. ARNO 3/20/18 ENG / PRTY APPROVAL: G. MAHLER 3/20/18 SUPERVISOR APPROVAL: J. TUOZZOLO 3/20/18 CEE / CME: _____ DIVISION HEAD: _____ QA: _____ SAFETY / RSC: _____ DEPARTMENT CHAIR: _____		CBETA TOP PLATE ASSEMBLY BRACKET, BPM SUPPORT, TYPE 4	
2570M0041	1	DIMENSIONS ARE IN INCHES		SIZE: D DRAWING NUMBER: 2570M0080 REV. A		Q.A. CATEGORY: A3 SCALE: 1/1 WEIGHT: 0.5 SHEET OF 1 1			
2570M0020	1	DECIMAL TOLERANCES		FINISH: 125 ✓ BREAK SHARP EDGES: MAX. .001 IN. 015		CREO			
2570M0017	1	XX± .030							
2570M0014	1	XXX± .015							
USED ON DRAWING NO.		QTY. PER ASSY.							
APPLICATION									

DWG NO 2570M0080 SHIT 1 OF 1