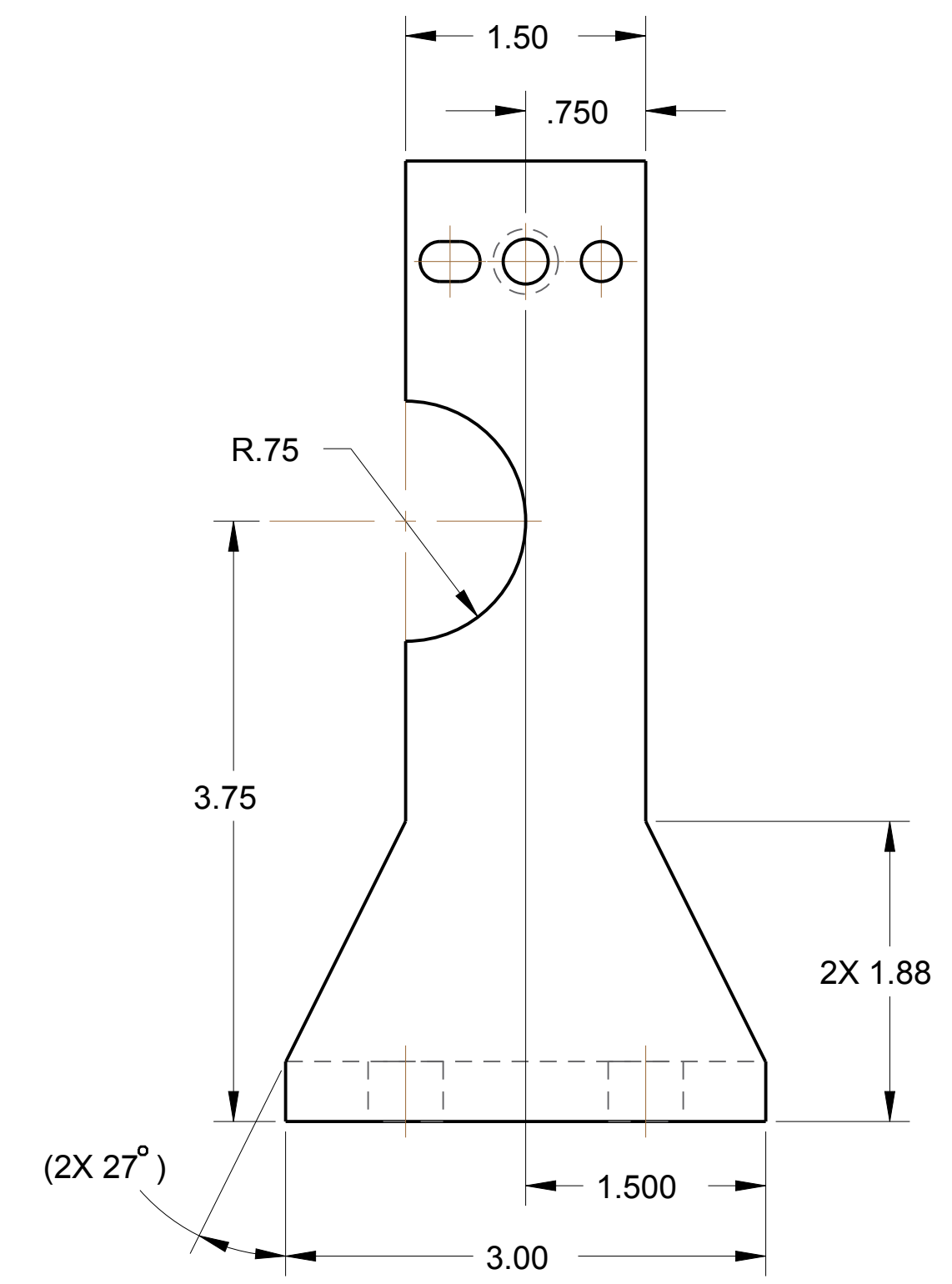
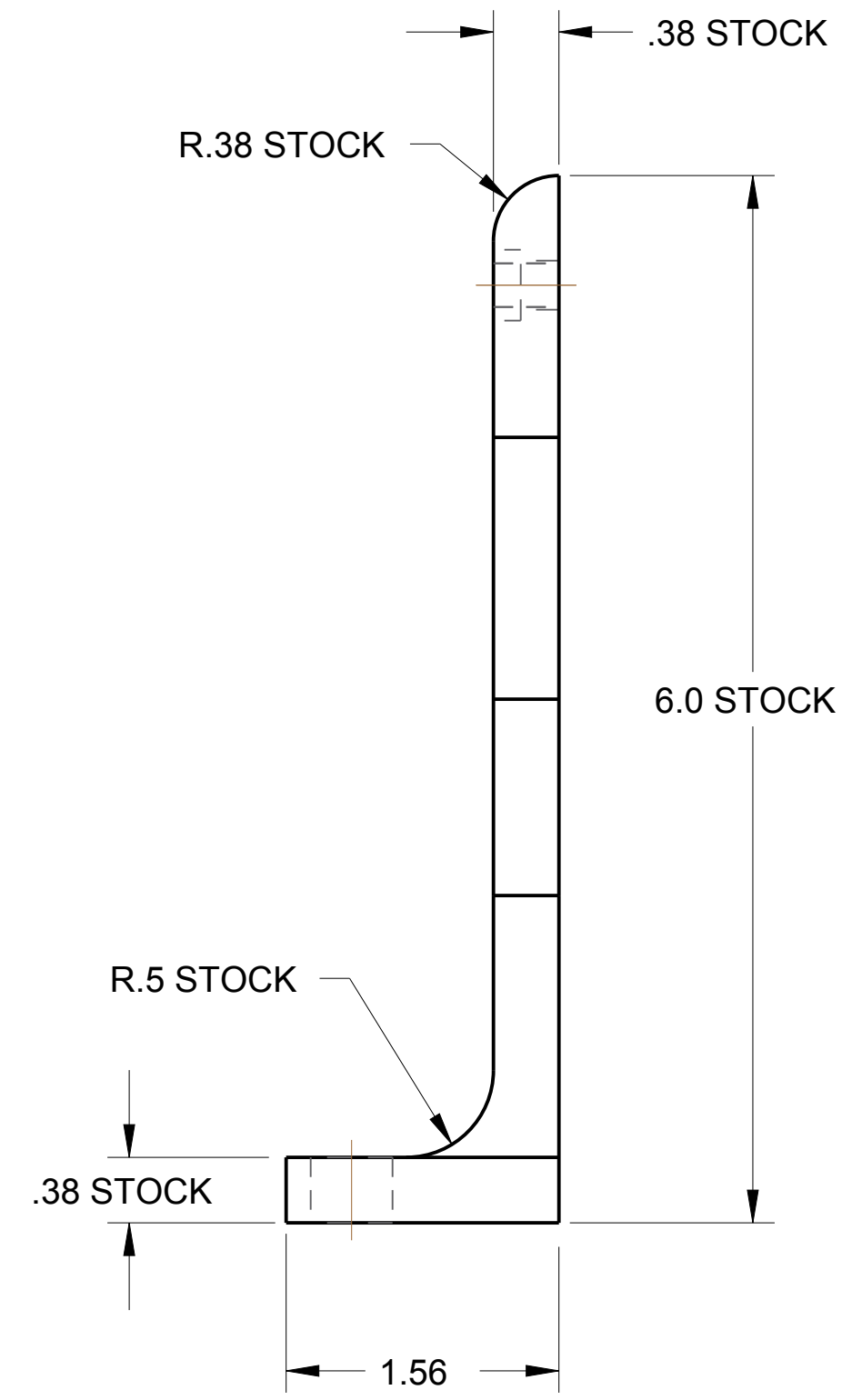
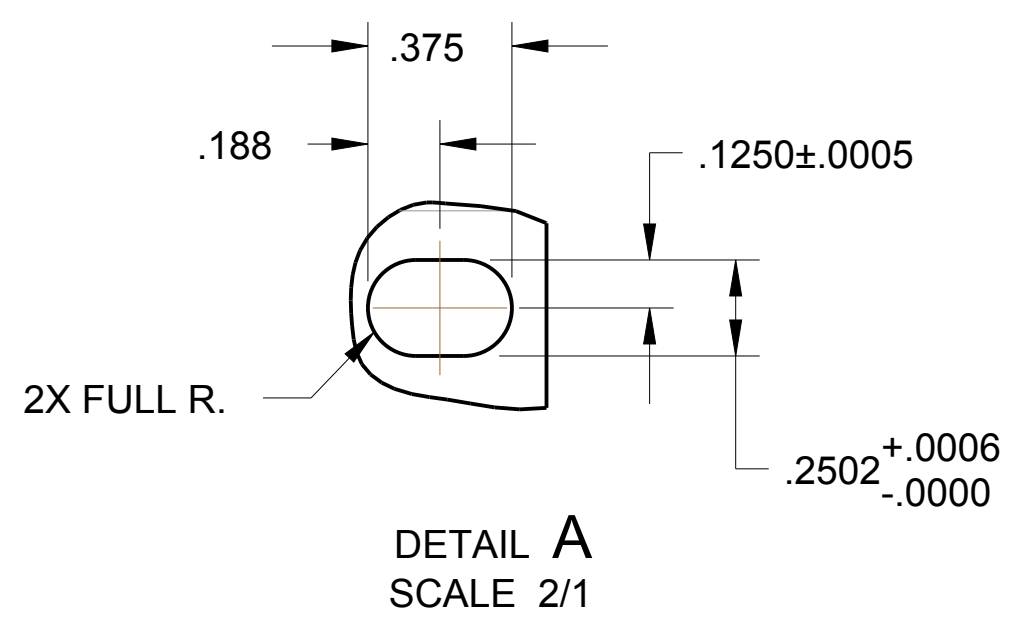
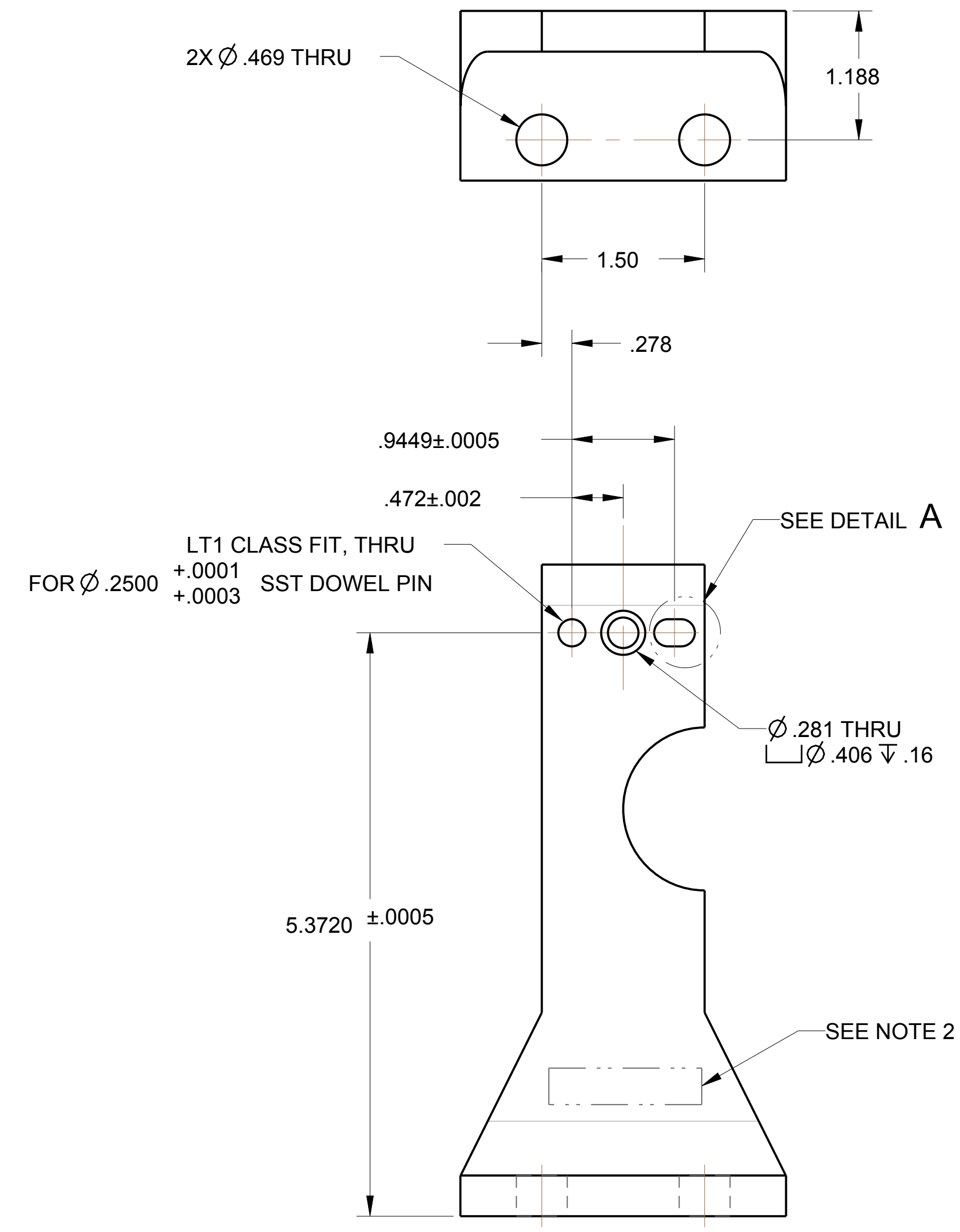


NOTES:

1. MATERIAL: ANGLE ALUMINUM STRUCTURAL TYPE 6061-T6 PER ASTM B308
2. VIBRO-ETCH PART WITH DRAWING NUMBER WITH MIN .12 HIGH CHARACTERS IN ACCORDANCE WITH MIL-STD-130, LOCATE APPROX AS SHOWN.

REVISION APPROVALS								
REV	ECN NO.	DESCRIPTION	DATE	BY	CHK	DES	ENG	SUPV
A	-	INITIAL RELEASE	-	-	-	-	-	-



INTERPRET IN GENERAL ACCORDANCE WITH ASME Y14.5				COLLIDER-ACCELERATOR DEPARTMENT BROOKHAVEN NATIONAL LABORATORY UPTON, N.Y. 11973			
UNLESS OTHERWISE SPECIFIED		DRAWN BY S. TRABOCCHI 09/27/17		CBETA TOP PLATE ASSEMBLY BRACKET, BPM SUPPORT, TYPE 7			
DIMENSIONS ARE IN INCHES		CHECKED BY S. RESTMEYER 3/19/18		DRAWING NUMBER: 2570M0083			
DECIMAL TOLERANCES		DESIGN APPROVAL A. ARNO 3/20/18		REV. A			
XX ± .030		ENGR / PNY APPROVAL G. MAHLER 3/20/18		Q.A. CATEGORY A3			
XXX ± .015		SUPERVISOR APPROVAL J. TUOZZOLO 3/20/18		SCALE: 1/1			
ANGULAR TOLERANCE ±1°		CEE / CME		WEIGHT: 1.9			
USED ON DRAWING NO.		DIVISION HEAD		SHEET OF 1 1			
QTY. PER ASSY.		QA		CREO			
APPLICATION		BREAK SHARP EDGES					
		MAX. .001 IN. 015					
		FINISH					
		SAFETY / RSC DEPARTMENT CHAIR					

DWG NO 2570M0083

SHT 1 OF 1