

Synchrotron Stripline BPM

Instrumentation 4/18/2025

Reference Paper

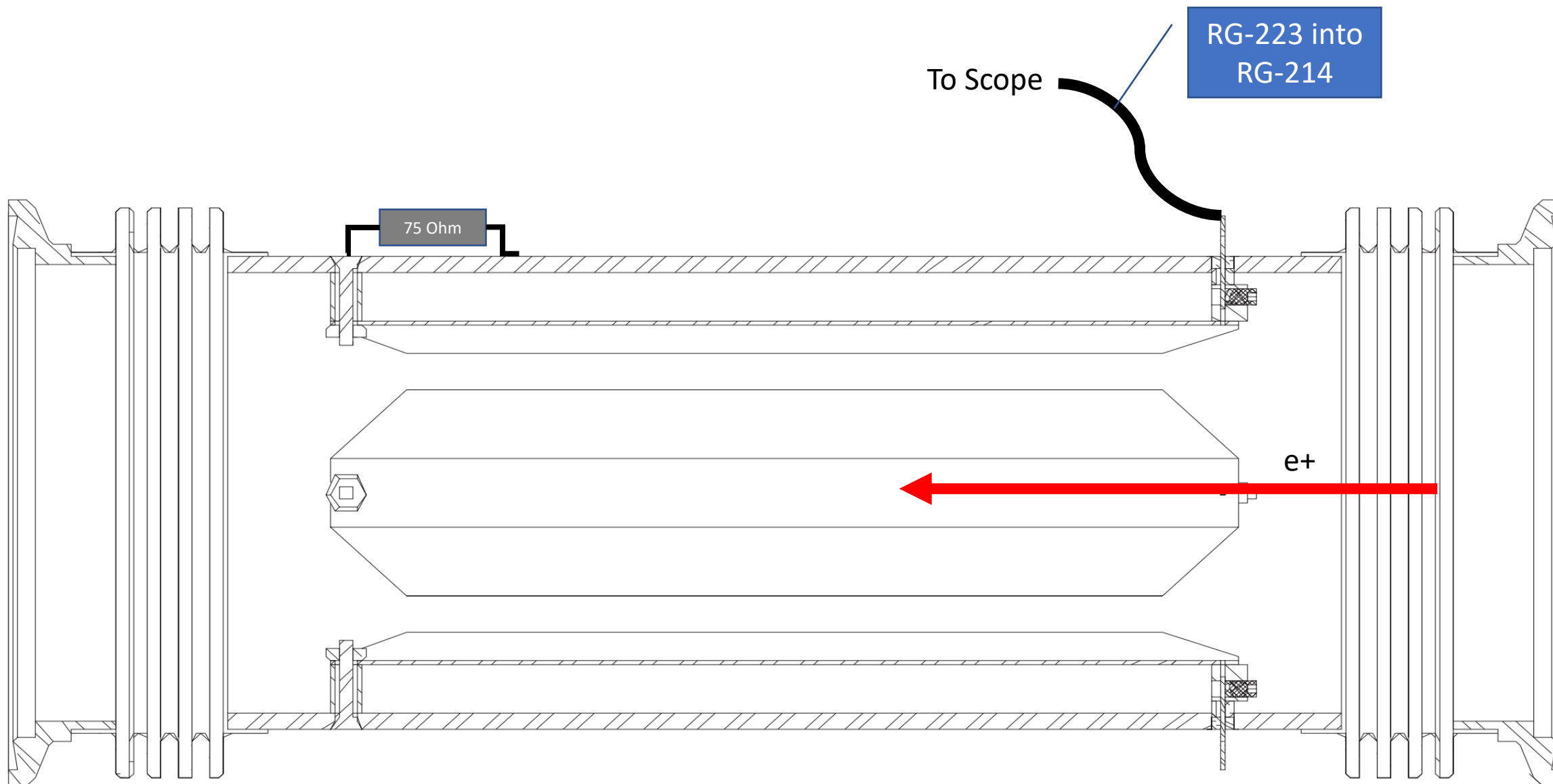
CBN 99-11

Beam Position Monitors for the Cornell Electron Synchrotron*

R. Holtzapple, G. Dugan, and R. Littauer

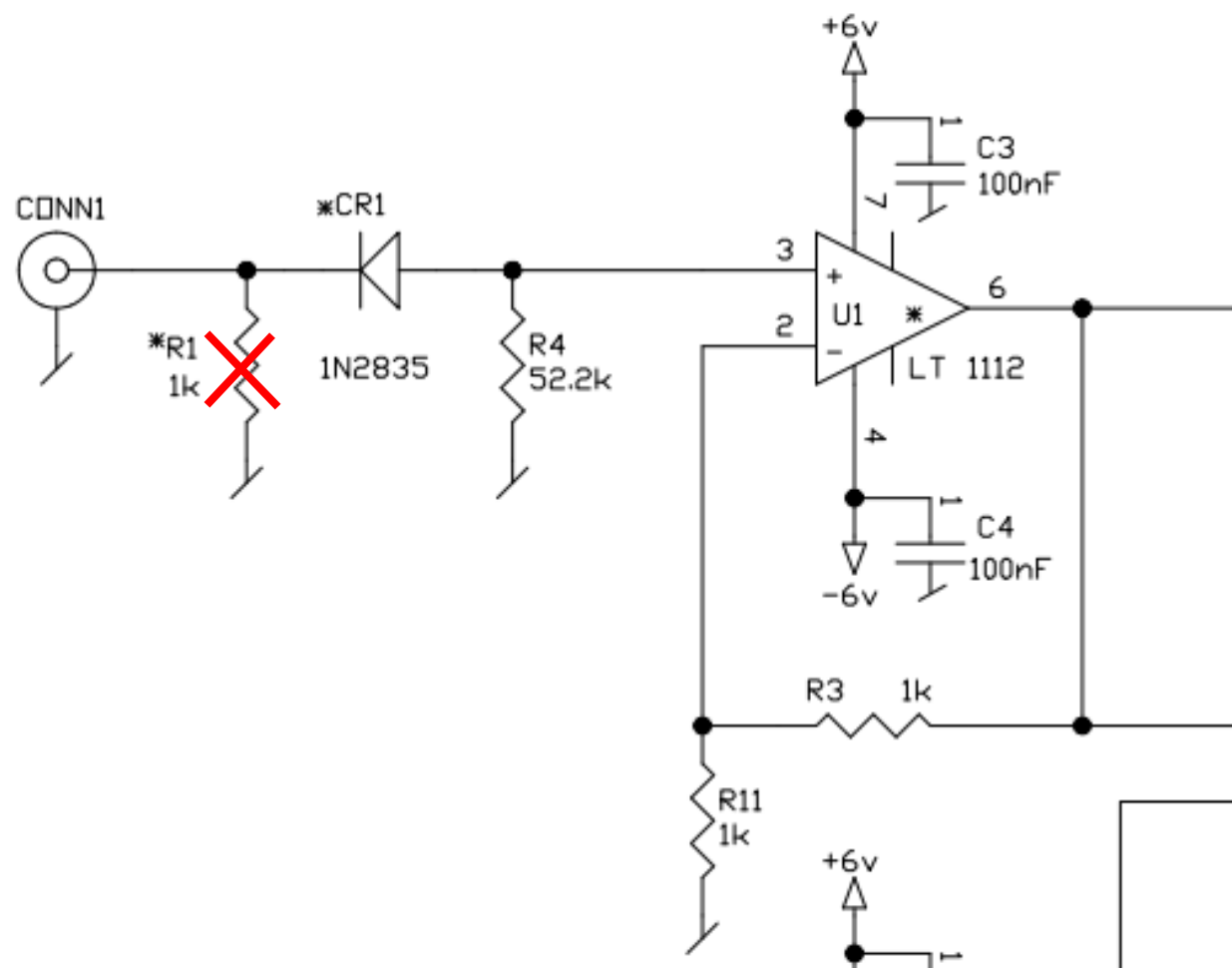
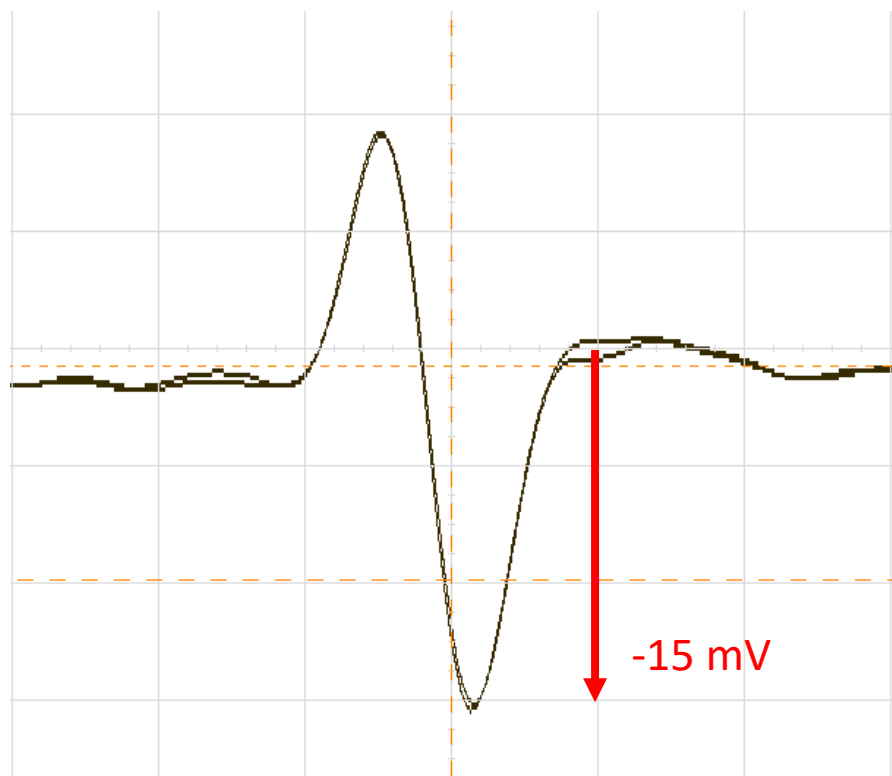
Laboratory of Nuclear Studies, Cornell University, Ithaca, NY 14853 USA

<https://www.classe.cornell.edu/public/CBN/1999/CBN99-11/cbn99-11.pdf>



- From the paper –
 - “Figure 1 shows one BPM consisting of four strip lines placed in symmetrical pairs on opposite sides of the beam in each dimension, horizontal (x) and vertical (y). The strip, spaced 9.5 mm from the wall of the tube, is 38 mm wide, yielding $Z_0 \approx 100 \Omega$. (The strips are lightly folded longitudinally to conform to the curvature of the tubular wall.)”

The Problem



Other Captures

