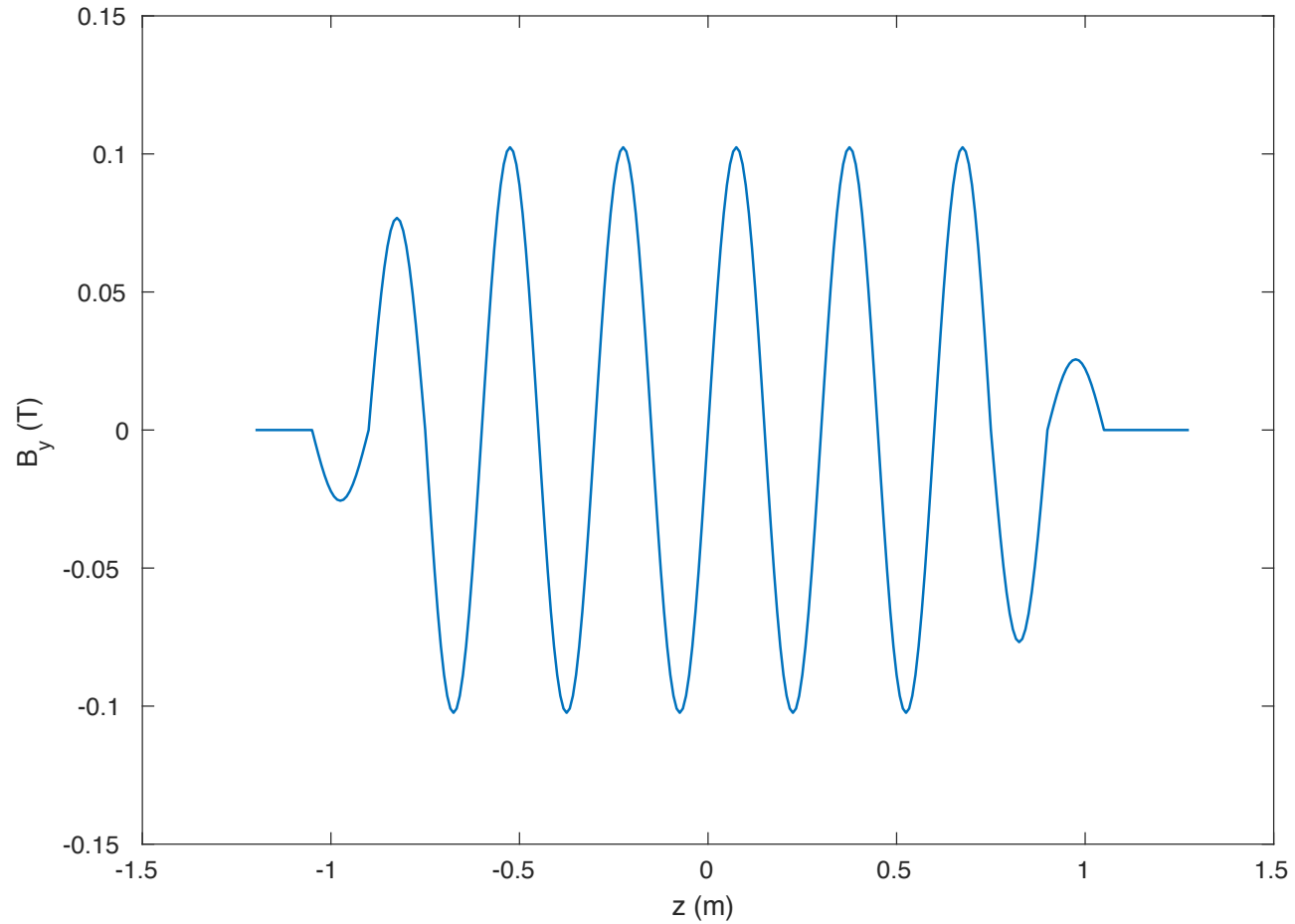


pick up undulator radiation pattern

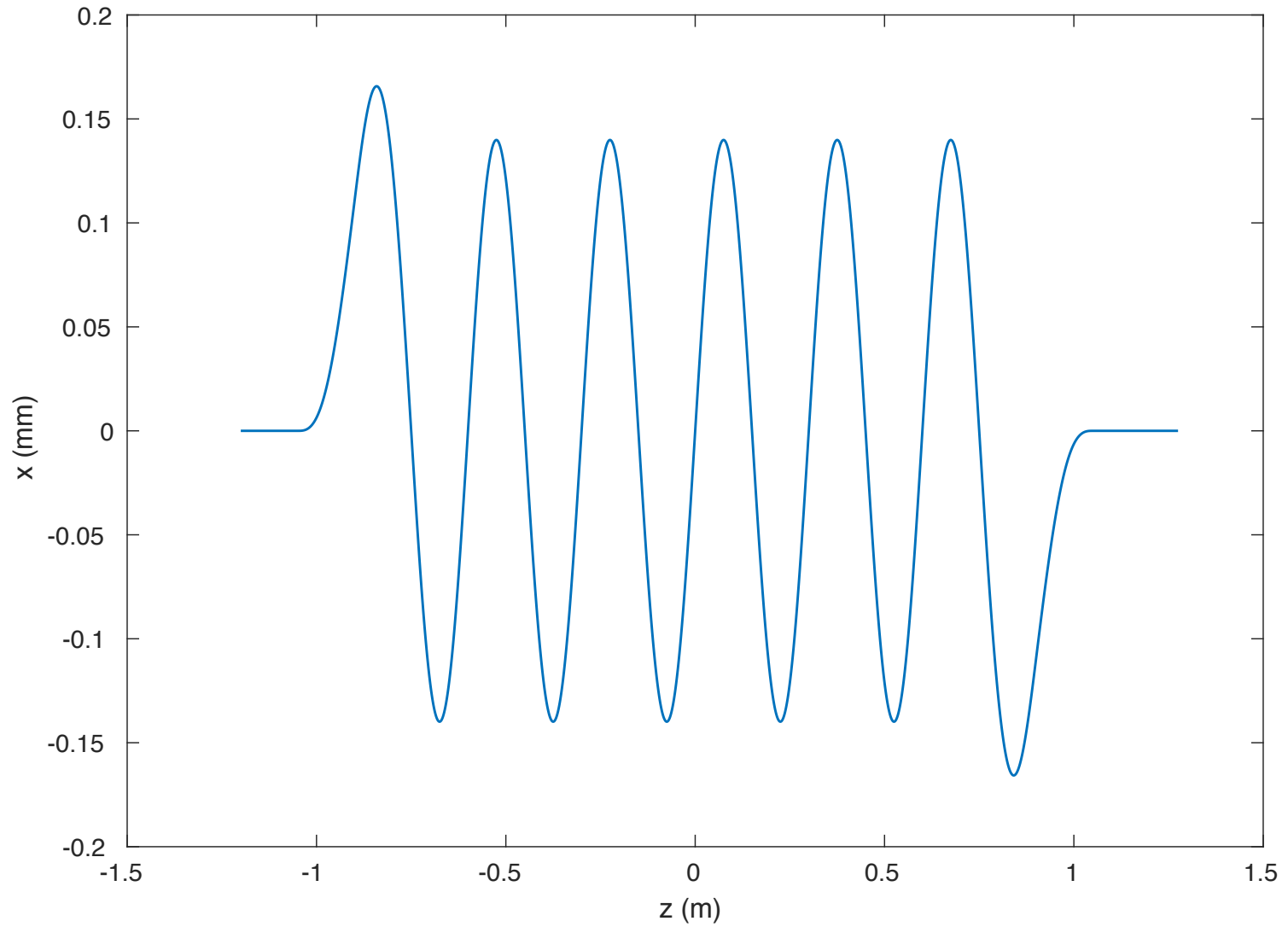
beam energy = 500 MeV, current = 0.39 amp (1nC bunch),
Bmax = 0.1024 T (K = 2.87), lambda_und = 30 cm,
lambda_1 = 800 nm

11/17/2017

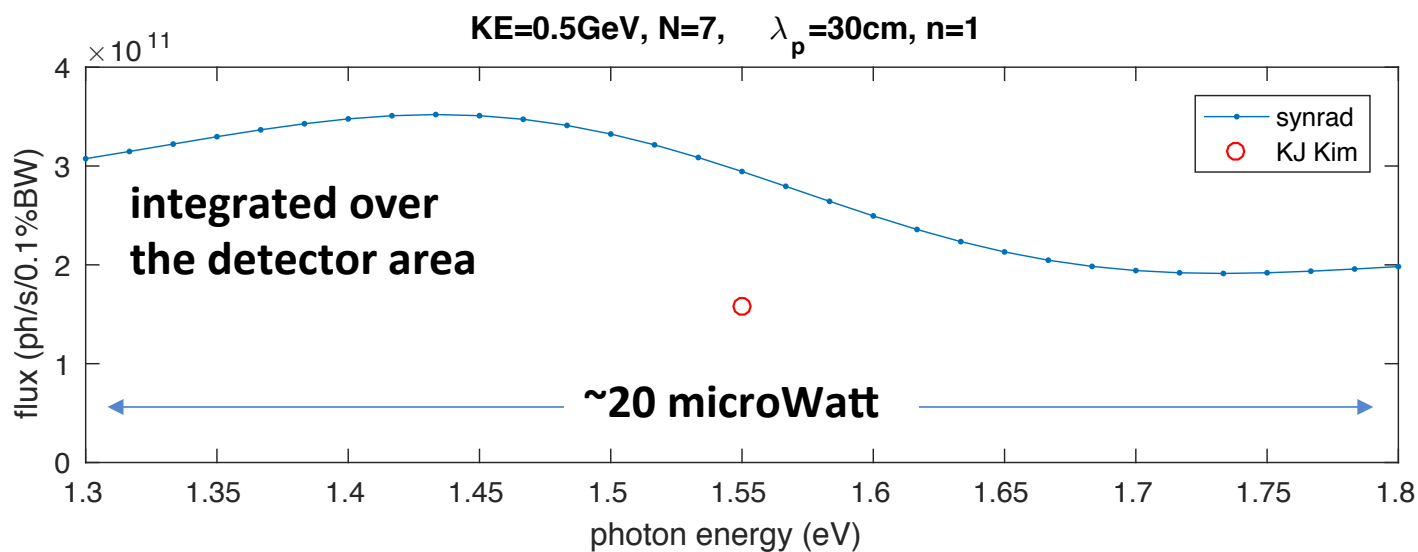
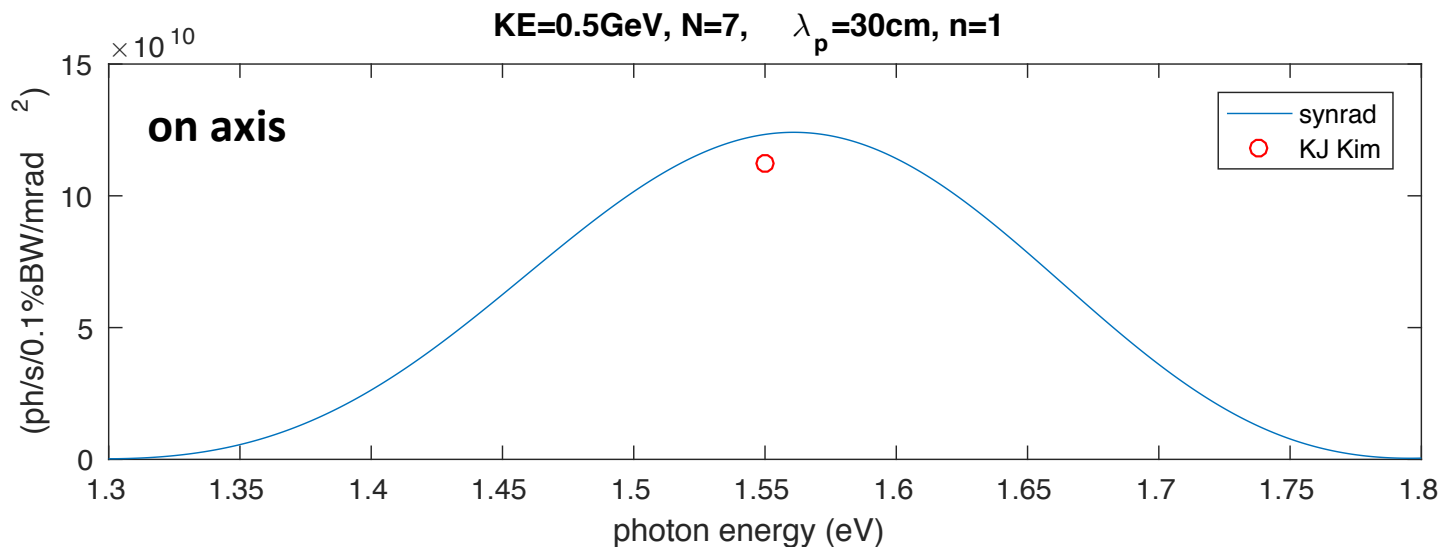
B-field (5 full periods)



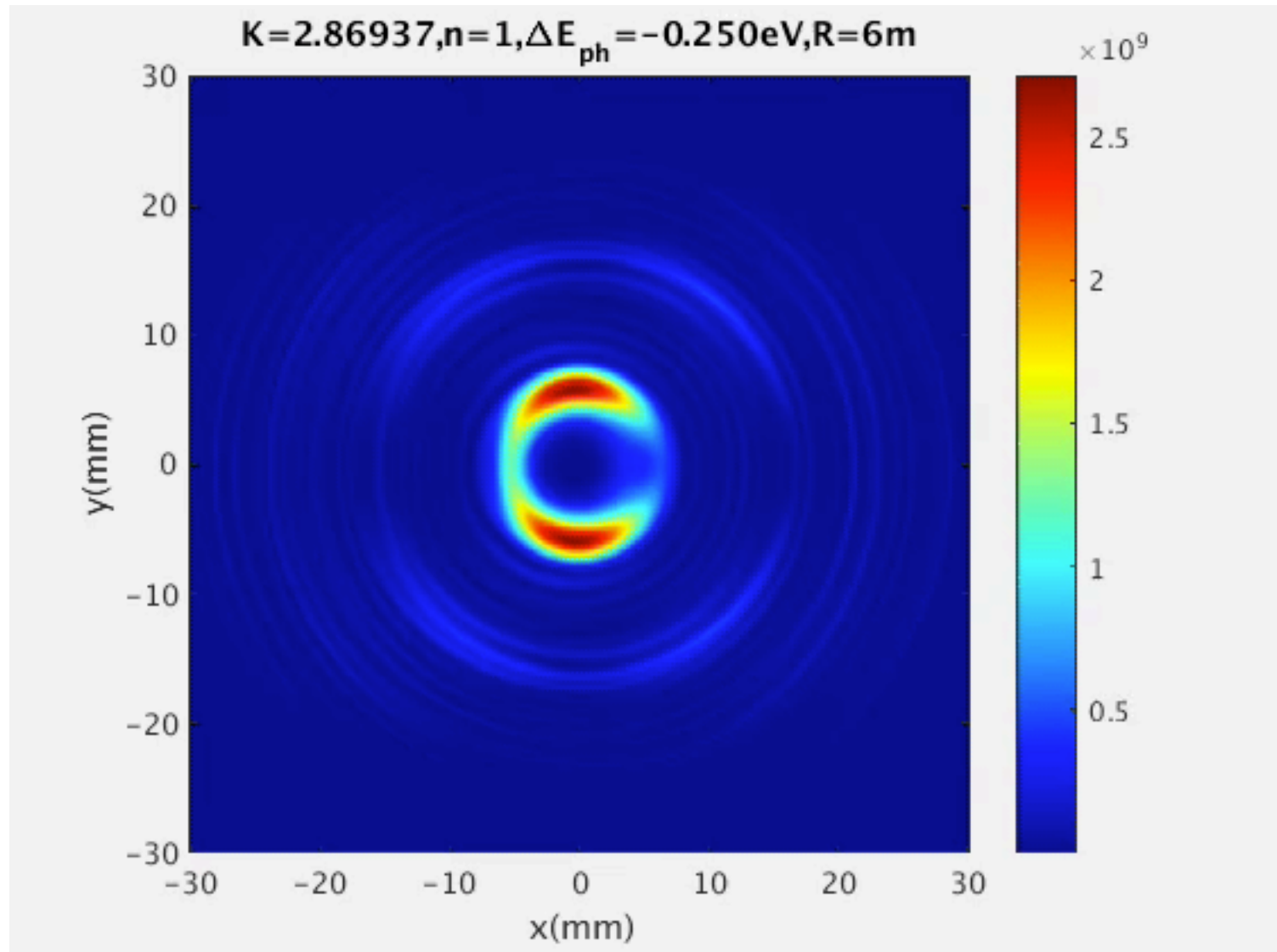
trajectory



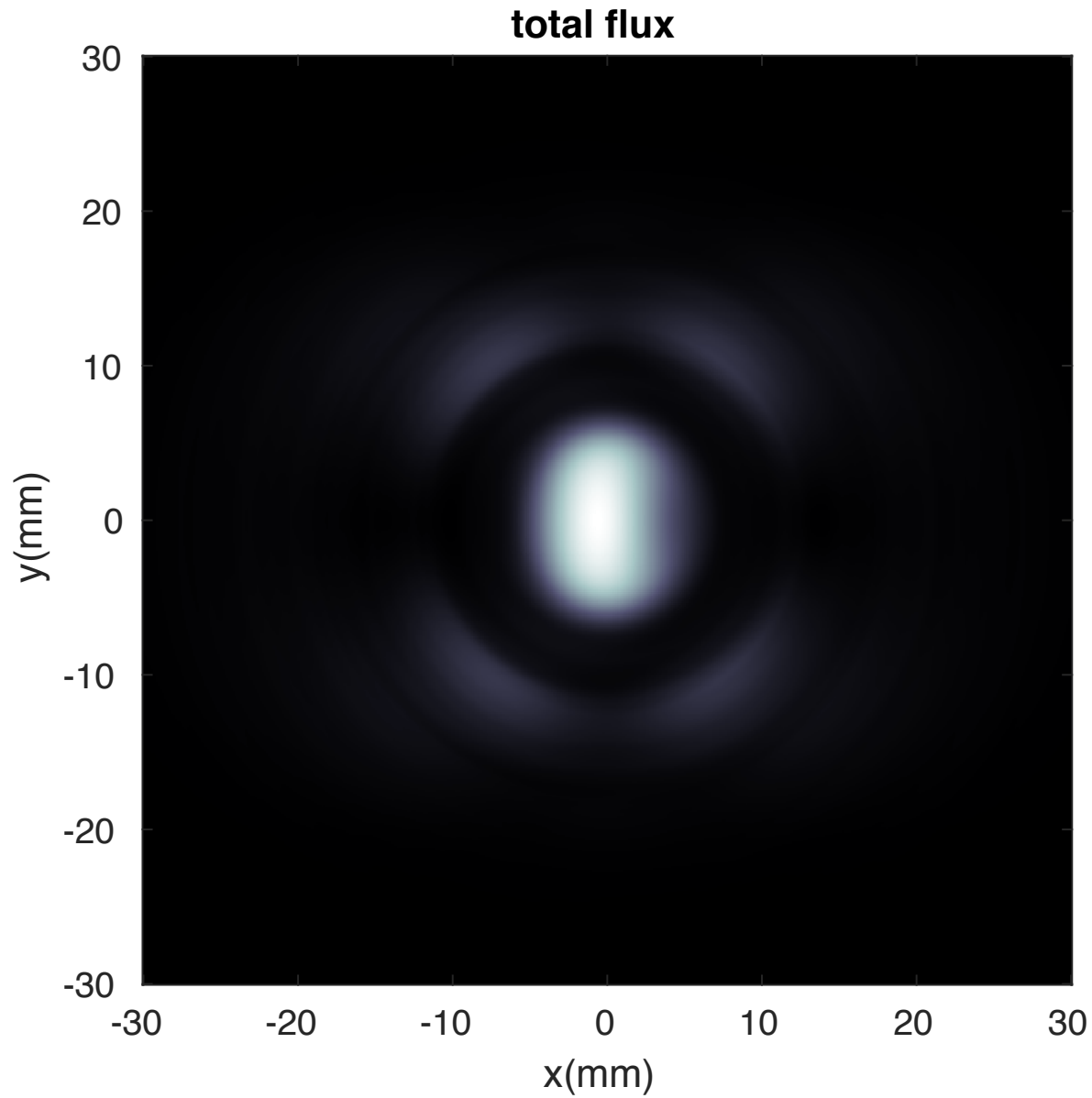
scan around the fundamental (6 m)



rad pattern (animation)



@ the location of the crystal (6m)



next steps: use the wavepacket from a single electron to compute the energy gain $\int E v dt$ in the kicker undulator

