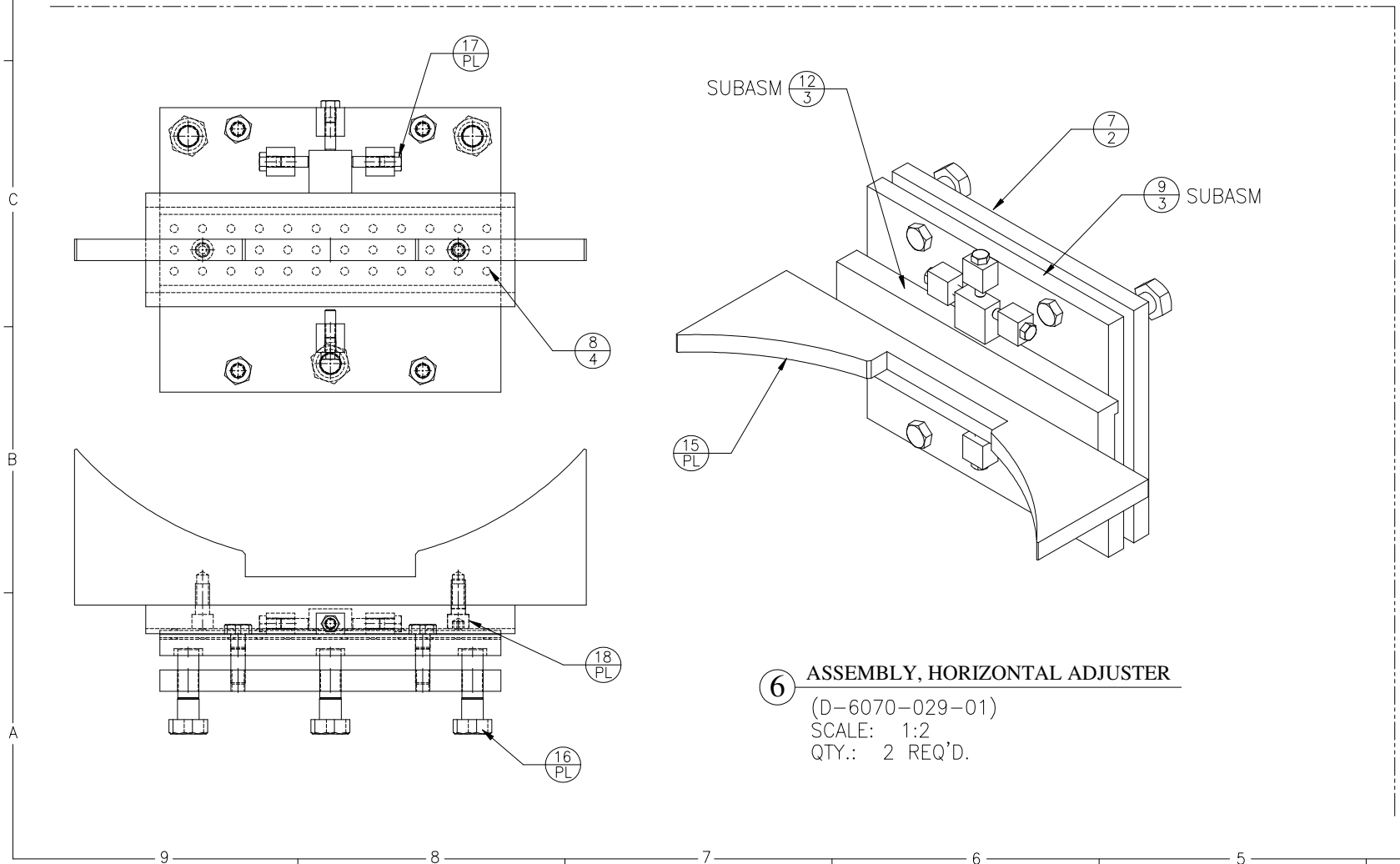


1 FRAME STAND ASSEMBLY
(D-6070-029-01)
SCALE: 1:10

REVISIONS				
SYM.	ZONE	DESCRIPTION	DATE	APP.
A		IN DWG TITLE, Q14E WIGGLER STAND WAS CALLED FRAME STAND ASM. DIM. 57.5 WAS 50.0. ITEM 10 QTY WAS 2, ITEM 17 QTY WAS 4. ADDED ITEMS 19 & 20 TO PARTS LIST.	7/15/02	KWS
B		REORDERED ITEMS IN PARTS LIST TO AGREE WITH ITEM CHANGES ON SHEETS 4 & 5. ADDED (4) HEAVY HEX BOLTS, 1/2-13 x 1-3/4 LG.	8-9-02	KWS



6 ASSEMBLY, HORIZONTAL ADJUSTER
(D-6070-029-01)
SCALE: 1:2
QTY.: 2 REQ'D.

ITEM	SH.	DWG. NO.	DESCRIPTION	Q1	Q2	Q3	REMARKS	REV.
21	SH. 5		ASM WITH VESSEL & PUMP INSTALLED	X				
20	SH. 4		LONG BAR	2				
19			HEAVY HEX BOLT		8		1/2-13 x 1.75 LONG	
18			HEX SOCKET HEAD CAP SCREW	4			1/2-13 x 1.125 LONG	
17			HEX BOLT	8			1/2-13 x 1.25 LONG	
16			HEAVY HEX BOLT	6	6		3/4-16 x 2.5 LONG	
15	6070-022-04		VESSEL CRADLE	2				
14	SH. 4		TOP PLATE	2				
13	SH. 2		ADJUSTER TAB	2				
12	SH. 3		SUBASM, TOP PLATE	2				
11	SH. 4		VERTICAL ADJUSTER PLATE	2				
10	SH. 2		ADJUSTER BLOCK	4				
9	SH. 3		SUBASM, HORIZ. ADJUSTER	2				
8	SH. 4		ROLLER WAYS	2				
7	SH. 2		TOP PLATE, SUPPORT	2				
6	SH. 1		ASSEMBLY, HORIZ. ADJUSTER	2				
5	SH. 2		SUPPORT, BASE PLATE		2			
4	SH. 2		SUPPORT, CONCRETE		2			
3	SH. 2		SUPPORT, I-BEAM		2			
2	SH. 6		SUBASM, SUPPORT LEG		2			
1	SH. 1		FRAME STAND ASSEMBLY	X				

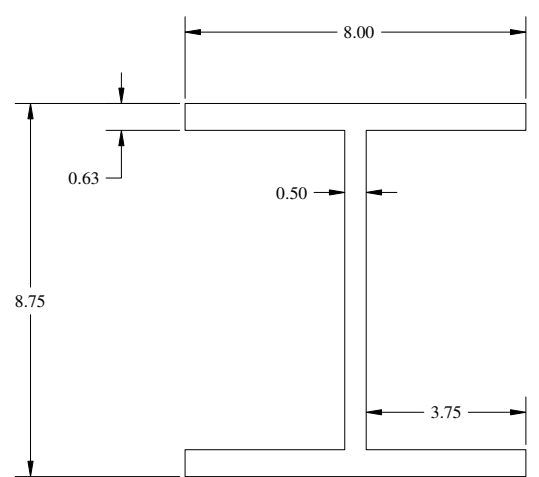
D SH. NO. 1 CONT. ON 2	PRINT DISTR.	PLOT DATE AUGUST 12, 2002		CAD FILE NAME Z:\draft\archive\6000\6070\6070-004 CESR-c 7-40 Wiggler Cryostat Asm\Stand_frame\Asm_stand_paper.dwg	
	CR-1	UNLESS OTHERWISE SPECIFIED		DIMENSIONS ARE IN INCHES	
		TOLERANCES ON:		FRACTIONS ±1/64	
				ANGLES ±0.5°	
				ALL SURFACES	
		CHECKED BY KWS	DRAWN BY KWS	DRAWN FOR N. MISTRY	DATE 4/30/02
		APPROVED BY KWS		SCALE AS NOTED	D 6070-029
					REV. B

FOR MACHINING LUBRICANT USE ONLY
ALKALINE DETERGENT LUBRICANT CIMSTAR 40
OR EQUIVALENT APPROVED BY CORNELL LNS.

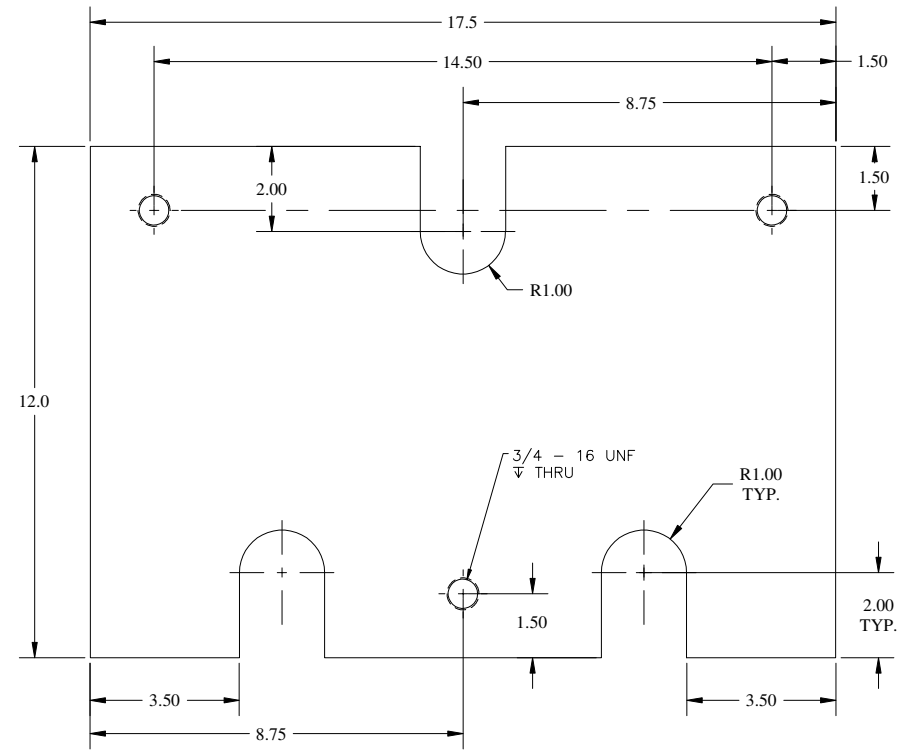
Cornell University
Floyd R. Newman Laboratory of Nuclear Studies - Ithaca, NY 14853

CESR-C 7-40 Wiggler Cryostat:
Q14E Wiggler Stand

REVISIONS				
SYM.	ZONE	DESCRIPTION	DATE	APP.
A		IN DWG TITLE, Q14E WIGGLER STAND WAS CALLED FRAME STAND ASM. FOR ITEM 5, ADDED ANOTHER 1" RAD SLOT. FOR ITEM 10, DIM 1.00 WAS 1.50 & .50 WAS .75 - ALSO QTY 4 WAS 2 PER SUBASM. D.M.E.	7/16/02	KWS
B		FOR ITEM 5, ADDED (3) 3/4-16UNF THRU HOLES. FOR ITEM 7, ADDED (4) 1/2-13UNC THRU HOLES & DIMS. D.M.E.	8-9-02	KWS

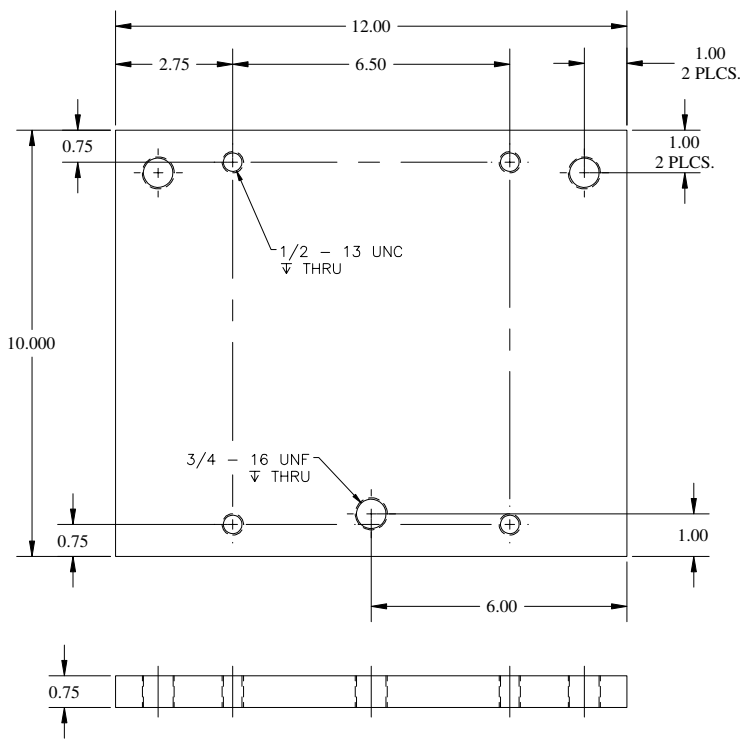


3 SUPPORT I-BEAM
 (D-6070-029-02)
 SCALE: 1:2
 MAT'L.: STEEL
 QTY.: 1 PER SUBASM

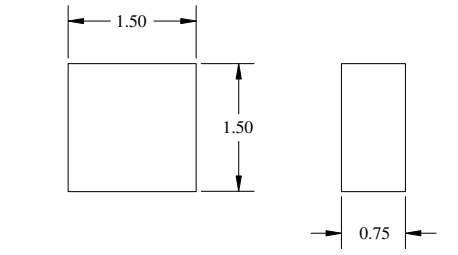


5 SUPPORT BASE PLATE
 (D-6070-029-02)
 SCALE: 1:2
 MAT'L.: STEEL
 QTY.: 1 PER SUBASM

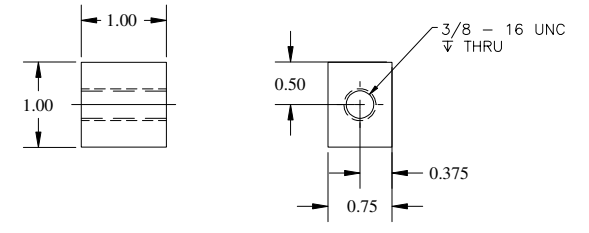
4 SUPPORT, CONCRETE NOTE: PART OF FLOOR.
 (NOT DETAILED)
 (D-6070-029-02)
 SCALE: 1:2
 MAT'L.: CONCRETE, 17.5" x 12.0" x 1" THK.
 QTY.: 1 PER SUBASM



7 TOP PLATE, SUPPORT
 (D-6070-029-02)
 SCALE: 1:2
 MAT'L.: STEEL
 QTY.: 1 PER SUBASM



13 ADJUSTER TAB
 (D-6070-029-02)
 SCALE: 1:1
 MAT'L.: STEEL
 QTY.: 1 PER SUBASM



10 ADJUSTER BLOCK
 (D-6070-029-02)
 SCALE: 1:1
 MAT'L.: STEEL
 QTY.: 2 PER SUBASM

FOR MACHINING LUBRICANT USE ONLY
 ALKALINE DETERGENT LUBRICANT CIMSTAR 40
 OR EQUIVALENT APPROVED BY CORNELL LNS.

ITEM	DWG. NO.	DESCRIPTION	QUANTITY			REMARKS	REV.
			G1	G2	G3		
D	6070-029	PRINT DISTR.					
		PLOT DATE AUGUST 12, 2002					
		CAD FILE NAME Z:\draft\archive\6000\6070\6070-004 CESR-c 7-40 Wiggler Cryostat Asm\Stand_frame\Asm_stand_paper.dwg					
		UNLESS OTHERWISE SPECIFIED					
		DIMENSIONS ARE IN INCHES					
		TOLERANCES ON:					
		00 ± 0.010					
		000 ± 0.005					
		FRACTIONS ± 1/64					
		ANGLES ± 0.5°					
		ALL SURFACES					
		CHECKED BY KWS	DRAWN BY KWS	DRAWN FOR N. Mistry	DATE 5/1/02	SCALE AS NOTED	D 6070-029
		APPROVED BY KWS					REV. B

Cornell University
 Floyd R. Newman Laboratory of Nuclear Studies - Ithaca, NY 14853
CESR-C 7-40 Wiggler Cryostat:
Q14E Wiggler Stand

REVISIONS				
SYM.	ZONE	DESCRIPTION	DATE	APP.
A		IN DWG TITLE, Q14E WIGGLER STAND WAS CALLED FRAME STAND ASM. ITEM 14 WAS CALLED OUT AS 13. FOR SUBASM 9, ADDED 5.50 DIM FOR LOCATING 2 ADDITIONAL ADJUSTER BLOCKS.	7/16/02	KWS
B		NEW BOLT HOLES SHOWN IN SUBASM 9 TO REFLECT THE CHANGES IN ITEM 11.	8-9-02	KWS

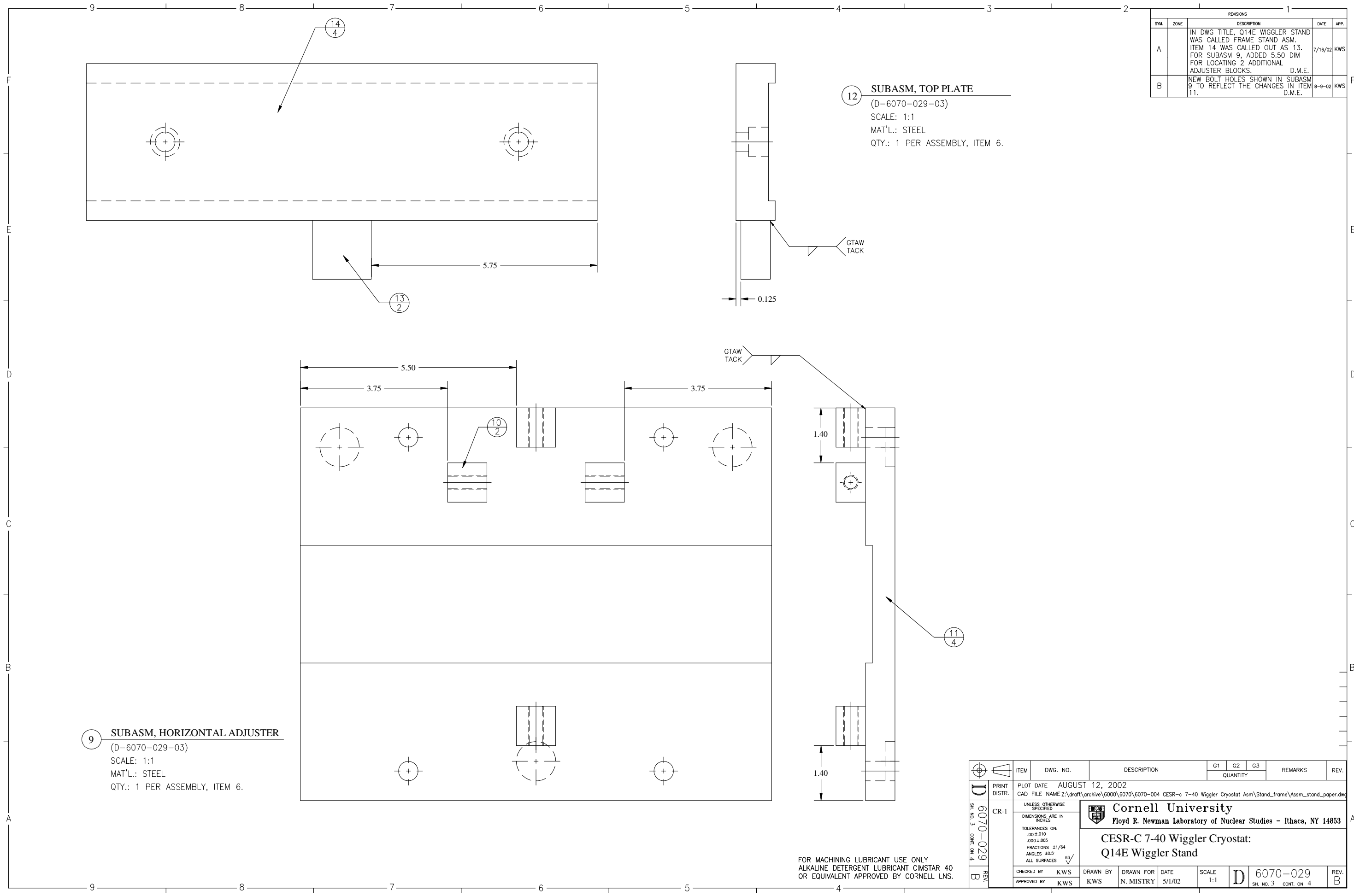
12 SUBASM, TOP PLATE
 (D-6070-029-03)
 SCALE: 1:1
 MAT'L.: STEEL
 QTY.: 1 PER ASSEMBLY, ITEM 6.

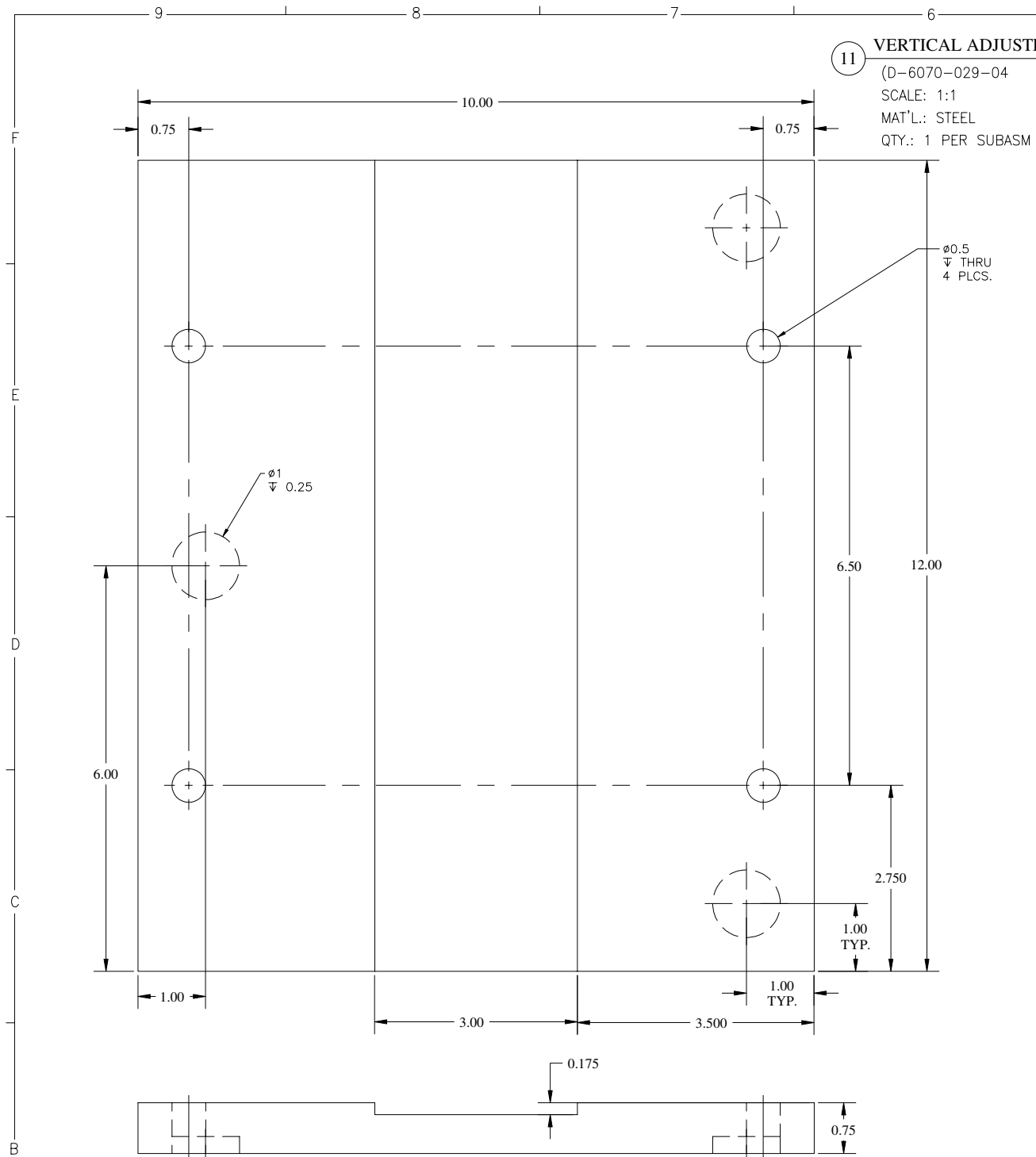
9 SUBASM, HORIZONTAL ADJUSTER
 (D-6070-029-03)
 SCALE: 1:1
 MAT'L.: STEEL
 QTY.: 1 PER ASSEMBLY, ITEM 6.

FOR MACHINING LUBRICANT USE ONLY
 ALKALINE DETERGENT LUBRICANT CIMSTAR 40
 OR EQUIVALENT APPROVED BY CORNELL LNS.

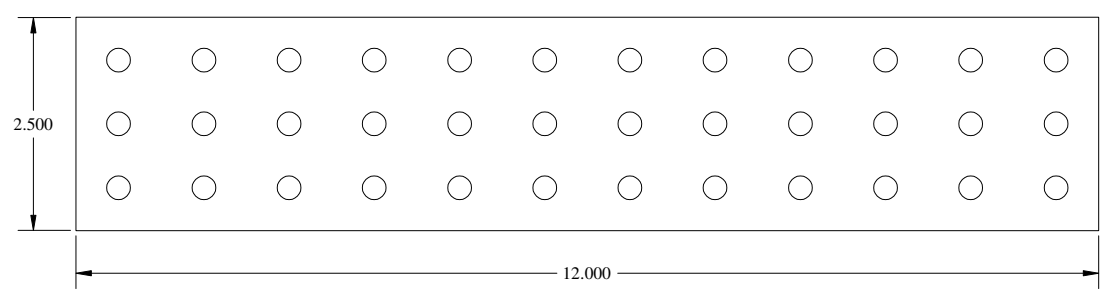
ITEM	DWG. NO.	DESCRIPTION	QUANTITY			REMARKS	REV.
			G1	G2	G3		
D	PRINT DISTR.	PLOT DATE AUGUST 12, 2002					
		CAD FILE NAME Z:\draft\archive\6000\6070\6070-004 CESR-c 7-40 Wiggler Cryostat Asm\Stand_frame\Asm_stand_paper.dwg					
	CR-1	UNLESS OTHERWISE SPECIFIED					
		DIMENSIONS ARE IN INCHES					
		TOLERANCES ON:					
		.00 ±.010					
		.000 ±.005					
		FRACTIONS ±1/64					
		ANGLES ±0.5°					
		ALL SURFACES $\sqrt{32}$					
		CHECKED BY	KWS	DRAWN BY	KWS	DRAWN FOR	N. MISTRY
		APPROVED BY	KWS	DATE	5/1/02	SCALE	1:1
		D 6070-029			REV.	B	
		SH. NO. 3 CONT. ON 4					

Cornell University
 Floyd R. Newman Laboratory of Nuclear Studies - Ithaca, NY 14853
CESR-C 7-40 Wiggler Cryostat:
Q14E Wiggler Stand

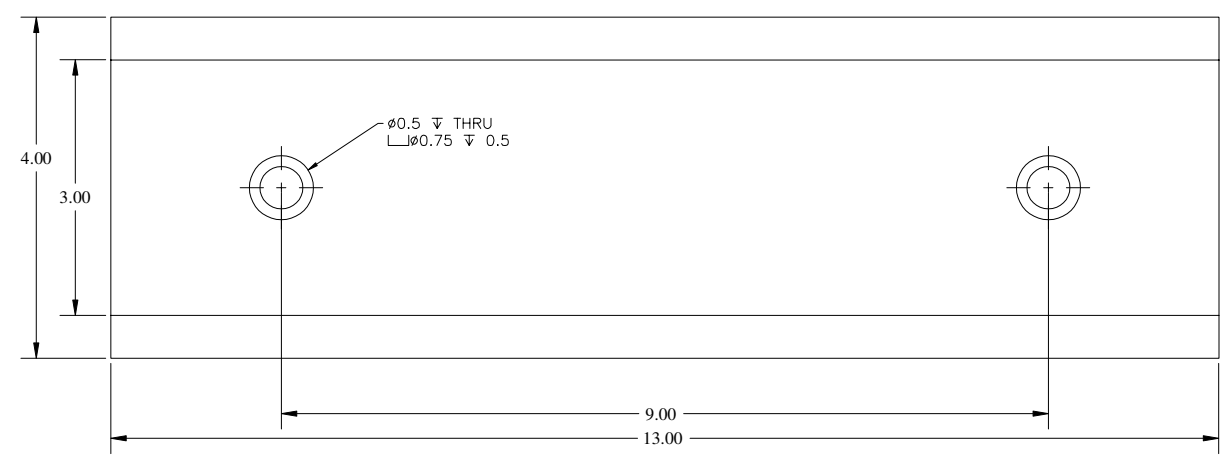




11 VERTICAL ADJUSTER PLATE
 (D-6070-029-04)
 SCALE: 1:1
 MAT'L.: STEEL
 QTY.: 1 PER SUBASM

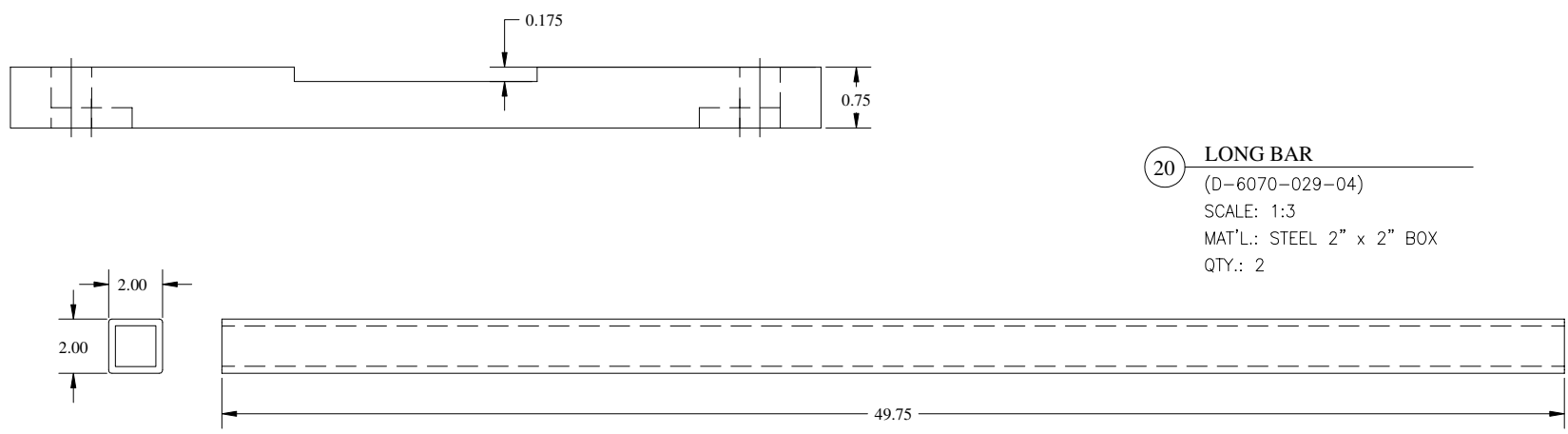


8 ROLLER WAYS
 (D-6070-029-04)
 SCALE: 1:1
 MAT'L.: STEEL
 QTY.: 1 PER ASSEMBLY, ITEM 6.
 PURCHASED MDC #06821029

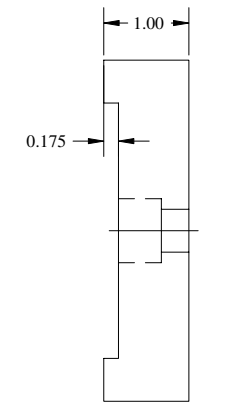
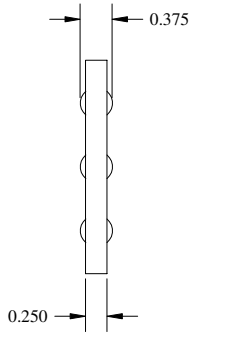


14 TOP PLATE
 (D-6070-029-04)
 SCALE: 1:1
 MAT'L.: STEEL
 QTY.: 1 PER SUBASM

20 LONG BAR
 (D-6070-029-04)
 SCALE: 1:3
 MAT'L.: STEEL 2" x 2" BOX
 QTY.: 2



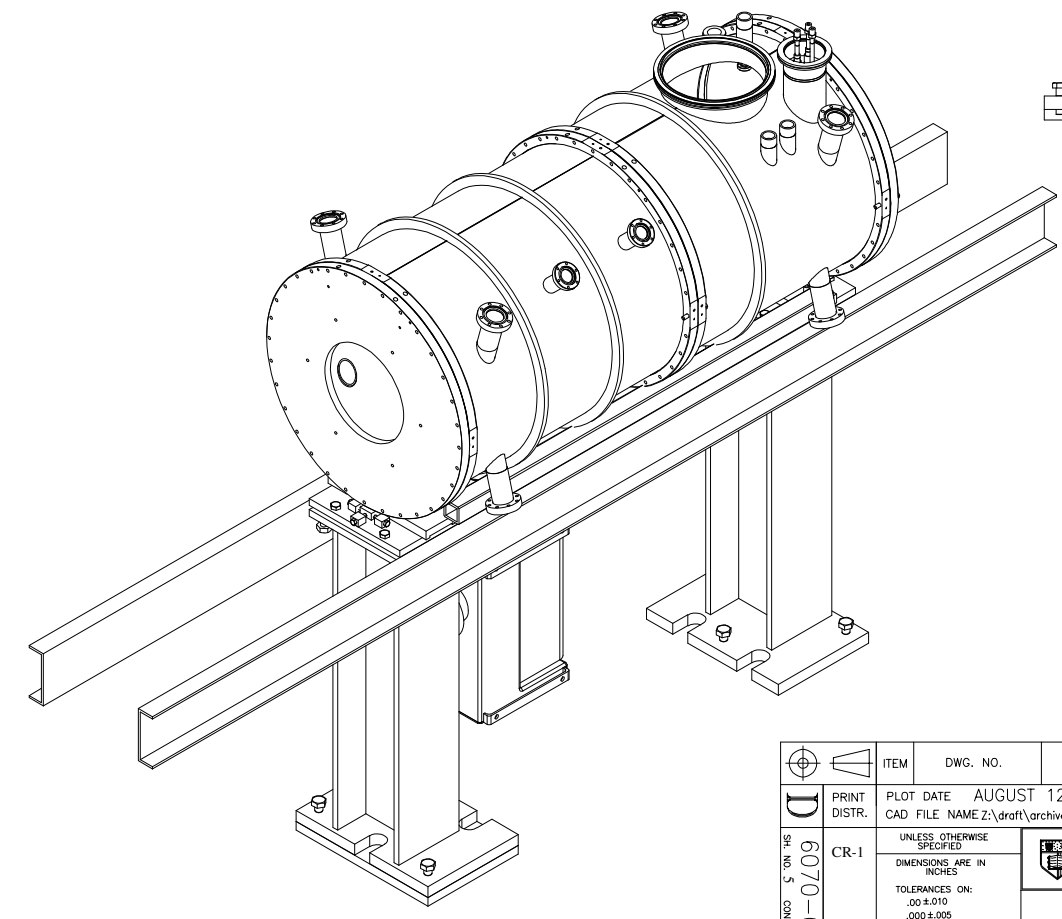
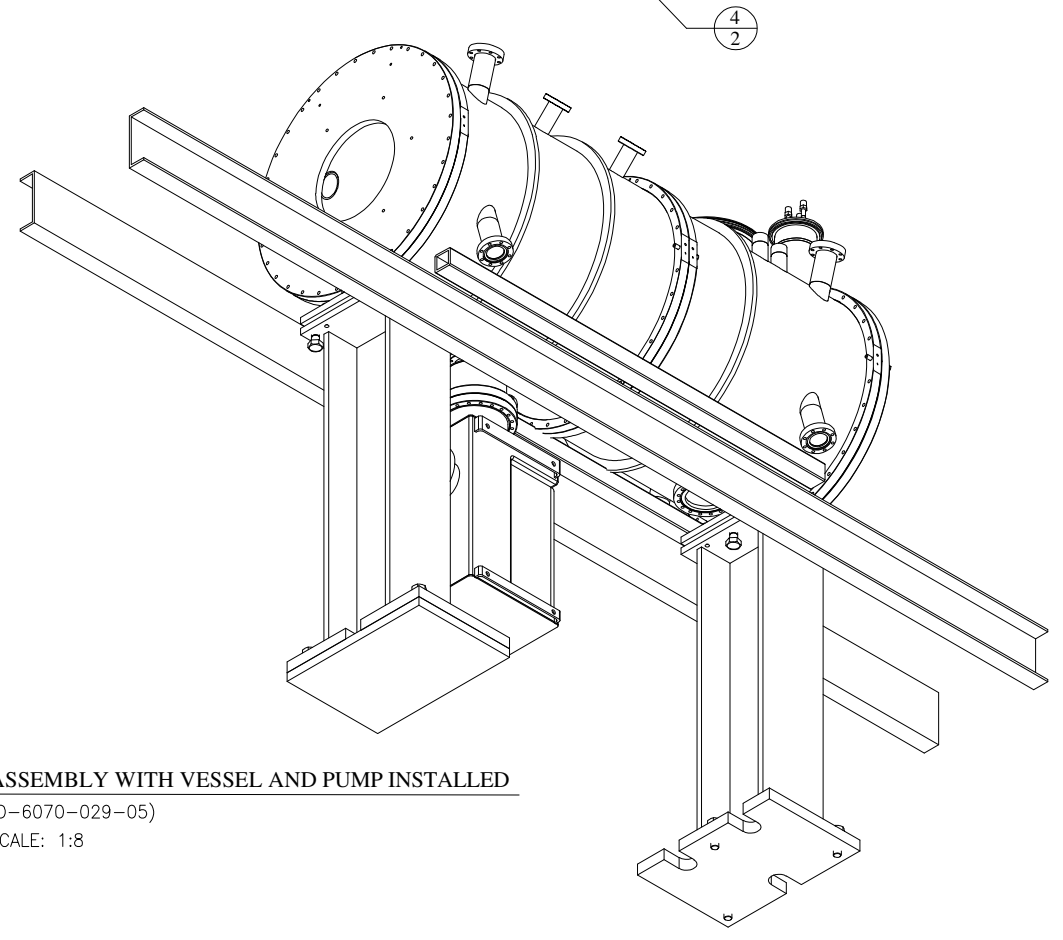
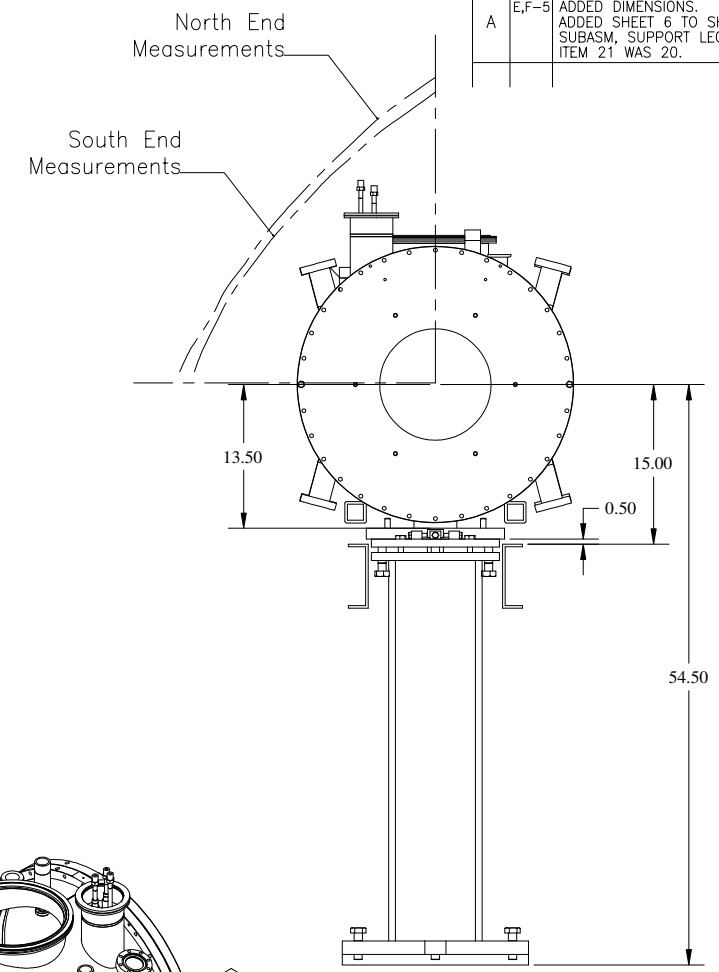
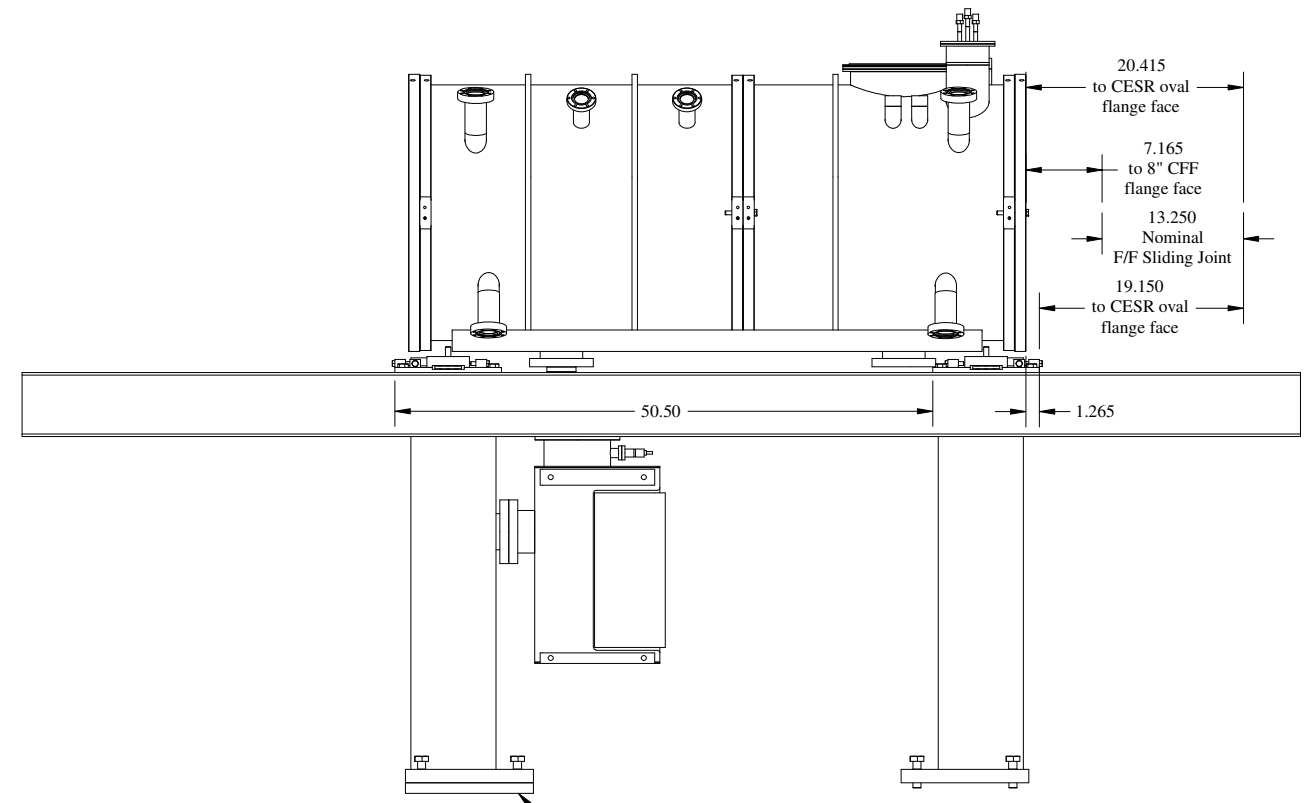
REVISIONS				
SYM.	ZONE	DESCRIPTION	DATE	APP.
A		IN DWG TITLE, Q14E WIGGLER STAND WAS CALLED FRAME STAND ASM. ITEM 11 WAS CALLED OUT AS 8. FOR ITEM 11, DIM 3.00 WAS 2.625 & 3.500 WAS 3.688. ITEM 8 WAS CALLED OUT AS 9. FOR ITEM 14, DIM 3.00 WAS 2.625. ADDED SHEET 5.	7/16/02	KWS
B		FOR ITEM 11, ADDED (4) .5 DIA. THRU HOLES, AND 2.75 DIM. ITEM 20 WAS ITEM 19.	8-9-02	KWS



FOR MACHINING LUBRICANT USE ONLY
 ALKALINE DETERGENT LUBRICANT CIMSTAR 40
 OR EQUIVALENT APPROVED BY CORNELL LNS.

ITEM	DWG. NO.	DESCRIPTION	QUANTITY			REMARKS	REV.
			G1	G2	G3		
D	6070-029	CR-1					
PRINT DISTR. PLOT DATE AUGUST 12, 2002 CAD FILE NAME Z:\draft\archive\6000\6070\6070-004 CESR-c 7-40 Wiggler Cryostat Asm\Stand_frame\Asm_stand_paper.dwg UNLESS OTHERWISE SPECIFIED DIMENSIONS ARE IN INCHES TOLERANCES ON: .00 ±.010 .000 ±.005 FRACTIONS ±1/64 ANGLES ±0.5 ALL SURFACES $\sqrt{\text{R}}$							
Cornell University Floyd R. Newman Laboratory of Nuclear Studies - Ithaca, NY 14853			CESR-C 7-40 Wiggler Cryostat: Q14E Wiggler Stand				
CHECKED BY	KWS	DRAWN BY	KWS	DRAWN FOR	N. MISTRY	DATE	5/1/02
APPROVED BY	KWS	SCALE	1:1	D	6070-029	REV.	B

SYMBOL		ZONE	DESCRIPTION	DATE	APP.
A		E,F-5	ADDED DIMENSIONS. ADDED SHEET 6 TO SHOW ITEM 2 SUBASM, SUPPORT LEG. ITEM 21 WAS 20.	8-9-02	KWS
					D.M.E.



21 ASSEMBLY WITH VESSEL AND PUMP INSTALLED
(D-6070-029-05)
SCALE: 1:8

FOR MACHINING LUBRICANT USE ONLY
ALKALINE DETERGENT LUBRICANT CIMSTAR 40
OR EQUIVALENT APPROVED BY CORNELL LNS.

ITEM	DWG. NO.	DESCRIPTION	QUANTITY			REMARKS	REV.
			G1	G2	G3		
D	6070-029	PRINT DISTR.					
		PLOT DATE AUGUST 12, 2002					
		CAD FILE NAME Z:\draft\archive\6000\6070\6070-004 CESR-c 7-40 Wiggler Cryostat Asm\Stand_frame\Asm_stand_paper.dwg					
CR-1		UNLESS OTHERWISE SPECIFIED					
		DIMENSIONS ARE IN INCHES					
		TOLERANCES ON:					
		.00 ±.010					
		.000 ±.005					
		FRACTIONS ±1/64					
		ANGLES ±0.5°					
		ALL SURFACES					
		63/					
		CHECKED BY KWS	DRAWN BY KWS	DRAWN FOR N. MISTRY	DATE 5/1/02	SCALE 1:8	D 6070-029
		APPROVED BY KWS					SH. NO. 5 CONT. ON 6

Cornell University
Floyd R. Newman Laboratory of Nuclear Studies - Ithaca, NY 14853
CESR-C 7-40 Wiggler Cryostat:
Frame Stand Assembly

